

www.ksr-kuebler.com  
KSR - KUEBLER AG



## Sight glass level gauge CL150 to 600

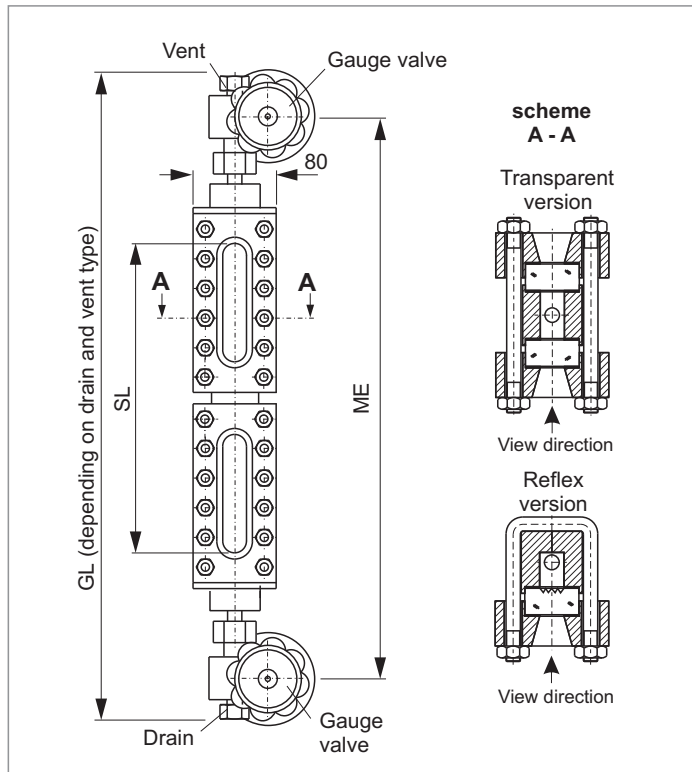
Light execution  
Reflex, Transparent  
Connection top-bottom pivoted  
Connection gauge valve to gauge chamber: union  
Offset, handwheel

Product group **700**

Type **21**

Sheet: 1 Revision: 0

Date: 08/2011



### Field of Application

Direct reading liquid level indicator for general applications up to CL600 (depends on glass type). Increased safety with ball check valves.

### General Data

Visible length SL: <ME - 180 mm  
Connection gauge valve - body: union  
Gauge valve types: see data sheet 760.53  
Actuation: hand wheel  
Material glass plates acc. to DIN 7081: Borosilicate  
Material media wetted parts: CS, SS  
Depending on delivery situation material can vary.  
Types with special materials e. g. Hastelloy, Monel etc. are available.

### Design Data

Derating depends on temperature and window size

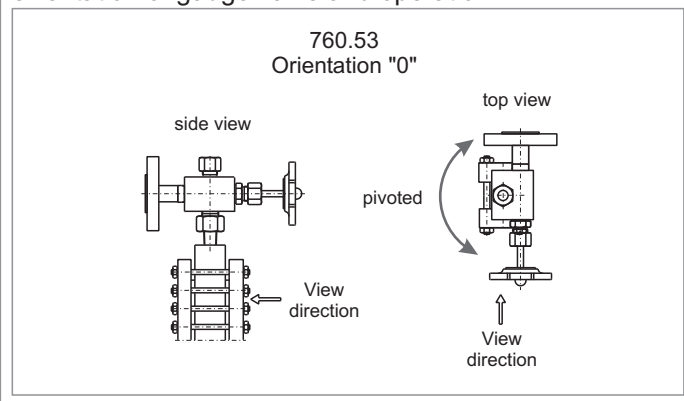
### Further Data

Connection gauge valve - body: see 700.VAR  
Process connection: see 700.VAR  
Vent: see 700.VAR  
Drain: see 700.VAR

### Accessories

Glass protection etc.: see accessories  
Frosts protection: see accessories  
Illumination: see accessories  
Scale: see accessories  
Heating: see accessories

### Orientation of gauge valve and operation



CS (= carbon steel) and SS (= stainless steel type 316SS) are materials suitable for Pressure Vessels according to EN or ASME.

Subject to alterations

### Ordering no.

7 0 0 2 1 X X 5 3 0 X X - X X - X X X X X X X X X - X X X X		see 700.VAR	ME [mm]
bridging	without	0	results from ME
	with	1	
glass window	Reflex (DIN 7081)	1	nos of segments
	Transparent (DIN 7081)	2	
gauge valve	760.53	5 3 0	see data sheet 760.53
			DIN-bolts, -nuts
			A ANSI-bolts, -nuts
			DIN/ASME
			gauge body
			orientation
			gauge valve

**KSR KUEBLER**  
Niveau-Messtechnik AG  
Heinrich-Kübler-Platz 1  
D-69439 Zwingenberg am Neckar  
Tel. ++49/62 63/87-0  
Fax ++49/62 63/87-99  
E-mail: info@ksr-kuebler.com  
Internet: www.ksr-kuebler.com



www.hccl.ie