



This range of metal quick exhaust valves is offered in nickel-plated brass, aluminium and stainless steel. The exhaust into the atmosphere accelerates the return speed of the cylinder rod.

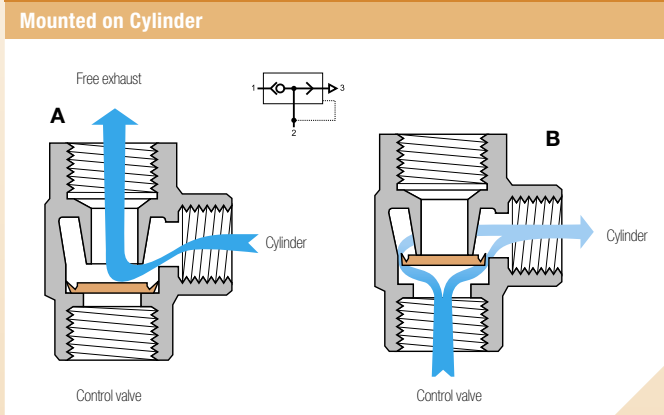
Technical Characteristics

- **Compatible Fluids:** Compressed air
- **Working Pressure:** 7970: 0.7 to 10 bar
7971 and 7899: 2 to 10 bar
- **Working Temperature:** 7970: -20°C to +70°C
7971: -10°C to +70°C
7899: Threads G1/8 and G1/4: -10°C to +120°C
Threads G3/8 to G1: -20°C to +180°C

Advantages

- Cycle time reduction: increased return speed
- Exhaust silencer integrated and 360° orientation available on some versions

Operation



Component Materials

Silicone-free

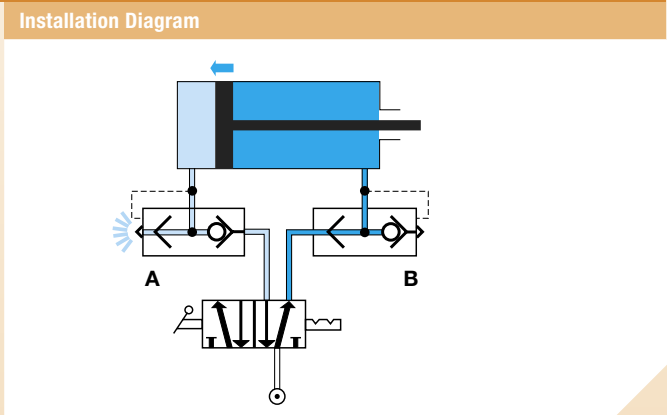
Lip seals:
7970-7971: polyurethane elastomer
7899: - G1/8 and G1/4 FKM
- G3/8 to G1, polyurethane

Body:
Model 7970: nickel-plated brass
Model 7971: anodised aluminium
Model 7899: stainless steel

Integrated silencer:
stainless steel (model 7971)

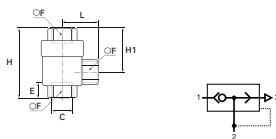
Regulations

- RoHS
- REACH
- PED



7970 Elbow Quick Exhaust Valve, Female BSPP and Metric Thread

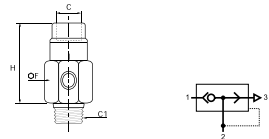
Nickel-plated brass



| C | E | F | H | H1 | L | Kg |
|--------------------------|-----|----|------|------|----|-------|
| M5x0.8 7970 19 19 | 5 | 10 | 24.8 | 15.6 | 4 | 0.029 |
| G1/8 7970 10 10 | 7.5 | 14 | 42 | 28 | 8 | 0.084 |
| G1/4 7970 13 13 | 11 | 19 | 53 | 34.5 | 11 | 0.150 |
| G3/8 7970 17 17 | 12 | 21 | 58 | 36 | 12 | 0.153 |
| G1/2 7970 21 21 | 14 | 26 | 71 | 44 | 14 | 0.312 |
| G3/4 7970 27 27 | 16 | 32 | 86 | 52 | 18 | 0.449 |
| G1 7970 34 34 | 19 | 38 | 94 | 56 | 19 | 0.528 |

7971 Elbow Quick Exhaust Valve, Male BSPT/ Female BSPP Thread

Treated aluminium

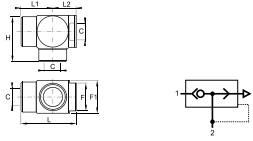


| C | C1 | F | H | Kg | |
|------|------|-------------------|----|----|-------|
| G1/8 | R1/8 | 7971 10 10 | 18 | 51 | 0.013 |
| G1/4 | R1/4 | 7971 13 13 | 18 | 49 | 0.018 |
| G3/8 | R3/8 | 7971 17 17 | 27 | 56 | 0.048 |
| G1/2 | R1/2 | 7971 21 21 | 34 | 70 | 0.086 |

Noise level:
7971 10 10: 70 dBa
7971 13 13: 70 dBa
7971 17 17: 72 dBa
7971 21 21: 88 dBa

7899 Quick Exhaust Valve, Female BSPP Thread

Stainless steel 316L



| DN | C | | F | F1 | H | L | L1 | L2 | Kg |
|----|------|-------------------|----|----|------|------|------|------|-------|
| 7 | G1/8 | 7899 00 10 | 17 | 22 | 31.5 | 37.5 | 21 | 16.5 | 0.096 |
| | G1/4 | 7899 00 13 | 17 | 22 | 31.5 | 37.5 | 21 | 16.5 | 0.083 |
| 9 | G3/8 | 7899 00 17 | 22 | 26 | 37 | 44.5 | 25.5 | 19 | 0.140 |
| 12 | G1/2 | 7899 00 21 | 27 | 32 | 45 | 54 | 31 | 23 | 0.235 |
| 18 | G3/4 | 7899 00 27 | 38 | 46 | 65 | 79 | 44 | 35 | 0.800 |
| | G1 | 7899 00 34 | 38 | 46 | 65 | 79 | 44 | 35 | 0.667 |

Noise level:

7971 10 10: 70 dBa

7971 13 13: 70 dBa

7971 17 17: 72 dBa

7971 21 21: 88 dBa