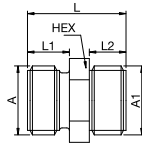




DN Male x Male Nipple

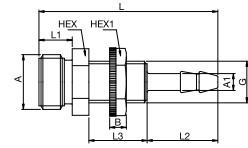
POM or CHEM



A	A1		HEX	L	L1	L2	Version
G1/4	G1/8		14	19	8	7	POM
G1/4	G1/4		14	19	8	7	POM
G3/8	G1/4		17	28.5	9	9	POM
G3/8	G3/8		21	25	9	9	POM
G3/8	G1/2		21	31.5	9	12	POM
G1/4	G1/8		14	19	8	7	CHEM
G1/4	G1/4		14	19	8	7	CHEM
G3/8	G1/4		17	28.5	9	9	CHEM
G3/8	G3/8		21	25	9	9	CHEM
G3/8	G1/2		21	31.5	9	12	CHEM

ET Panel Mount, Standard Hose Connection

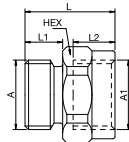
POM or CHEM



A		HEX	HEX1	B	G	L	L1	L2	Version
G1/4		14	14	4	M10x1	43	7	8	POM
G1/4		14	17	4	M12x1	43	8	8	POM
G1/4		14	14	4	M10x1	43	7	8	CHEM
G1/4		14	17	4	M12x1	43	8	8	CHEM

RL Reducing Bush

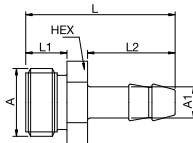
POM or CHEM



A	A1		HEX	L	L1	L2	Version
G1/4	G1/8		14	22	8	8	POM
G1/4	G1/4		17	25	8	10	POM
G3/8	G1/4		17	21.5	9	10	POM
G3/8	G3/8		21	21.5	9	10	POM
G3/8	G1/2		17	32.5	9	13	POM
G1/4	G1/8		14	22	8	8	CHEM
G1/4	G1/4		17	25	8	10	CHEM
G3/8	G1/4		17	21.5	9	10	CHEM
G3/8	G3/8		21	21.5	9	10	CHEM
G3/8	G1/2		17	32.5	9	13	CHEM

GT Hose Tail Barb

POM or CHEM



A	A1		HEX	L	L1	L2	Version
G1/4	4		14	29	8	17	POM
G1/4	6		14	29	8	17	POM
G3/8	6		17	39	9	22	POM
G3/8	9		17	39	9	22	POM
G3/8	13		17	42	9	25	POM
G1/4	4		14	29	8	17	CHEM
G1/4	6		14	29	8	17	CHEM
G3/8	6		17	39	9	22	CHEM
G3/8	9		17	39	9	22	CHEM
G3/8	13		17	42	9	25	CHEM