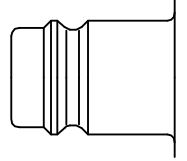




energy saver

Premium industrial coupling 1/2" with standard European profile. Suitable for compressed air applications with greater than average air consumption. Above average flow values compared with standard market products. Coupling system with single-hand operation. Ultra High Flow valve for optimum flow and low pressure drop.

- Available on request:
 - with additional end connections
 - other seals for different temperature ranges and fluids



Euro Profile

Dust Protections (P. 357)
for Coupling Part.-No. SK27S



02 // Couplings

Brass/Steel

Series 1700

KA Single Shut-Off

Working Pressure*:
up to 35 bar

Material:

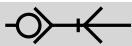
- Coupling: Nickel plated brass, QPQ treated steel
- Plug: Nickel plated steel
- Seals: NBR

Working Temperature:
-20°C up to +100°C (NBR)

Flow Rate Air:
3.500 l/min.
inlet pressure 6 bar, pressure drop 0.5 bar

Flow Rate Water:
51 l/min.
pressure drop 0.5 bar

* maximum static working pressure with design factor 4 to 1.



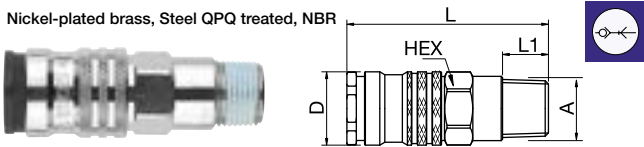
Single Shut-Off



Single Shut-Off

1700KAAK Coupler with valve, Male Thread

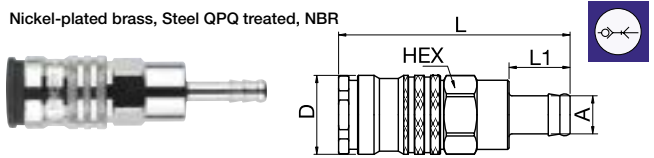
Nickel-plated brass, Steel QPQ treated, NBR



A	HEX	L	L1	D
R3/8 1700KAAK17SPN	24	70	12	27
R1/2 1700KAAK21SPN	24	75	17	27
R3/4 1700KAAK26SPN	27	64	17	27

1700KATF Coupler with valve, Hose Barb

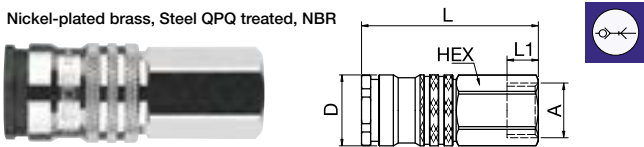
Nickel-plated brass, Steel QPQ treated, NBR



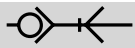
A	HEX	L	L1	D
10 1700KATF10SPN	24	80	21	27
13 1700KATF13SPN	24	80	21	27
16 1700KATF16SPN	24	80	21	27
19 1700KATF19SPN	24	80	21	27

1700KAIW Coupler with valve, Female Thread

Nickel-plated brass, Steel QPQ treated, NBR



A	HEX	L	L1	D
G3/8 1700KAIW17SPN	24	64.5	10	27
G1/2 1700KAIW21SPN	24	68	11	27
G3/4 1700KAIW26SPN	32	69	14	27

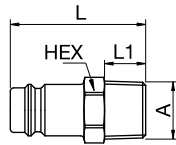


Single Shut-Off



27SFAK Plug without valve, Male Thread

Nickel-plated steel



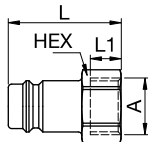
A

HEX L L1

R1/4	27SFAK13SXN	17	40	12
R3/8	27SFAK17SXN	17	40	12
R1/2	27SFAK21SXN	22	45	17
R3/4	27SFAK26SXN	27	48	19

27SFIW Plug without valve, Female Thread

Nickel-plated steel



A

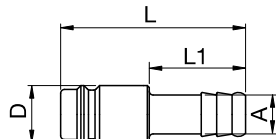


HEX L L1

G1/4	27SFIW13SXN	17	33	9	
G3/8	27SFIW17SXN	9086 27 17	19	33	9
G1/2	27SFIW21SXN	9086 27 21	24	37	12
G3/4	27SFIW26SXN	9086 27 27	32	42	16

27SFTF Plug without valve, Hose Barb

Nickel-plated steel



A



L L1 D

6	27SFTF06SXN	48	25	15	
8	27SFTF08SXN	9085 27 08	48	25	15
9	27SFTF09SXN	48	25	15	
10	27SFTF10SXN	9085 27 10	48	25	15
13	27SFTF13SXN	9085 27 13	48	25	15
16	27SFTF16SXN	49	25	18	
19	27SFTF19SXN	9085 27 19	49	25	21