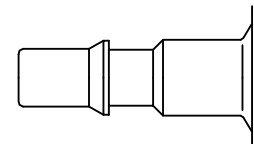




Safety coupling with a self-venting system for ISO 6150 C plug profile. Self-venting takes place during disconnection – no risk of pressurised hoses being tossed around. When the Push-Button is pressed for the first time, air is relieved from the coupling but the plug in the coupling remains locked. The plug is only disconnected when the Push-Button is pressed for the second time. System fulfils the requirements of ISO4414 – increased safety standards in the work place. DIN EN 983. Coupling body is 360° rotating so Push-Button is visible in any position.



ISO 6150 C Profile



Working Pressure*:

up to 12 bar

Material:

- Coupling: Anodised Aluminium, Nickel plated brass
- Plug: Nickel plated steel
- Seals: NBR

Working Temperature:

-20°C up to +100°C (NBR)

Flow Rate Air:

810 l/min.

inlet pressure 6 bar, pressure drop 0.5 bar

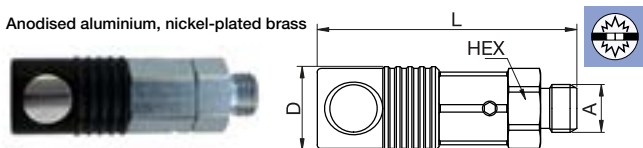
* maximum static working pressure with design factor 4 to 1.



Self-Venting System

18KPAW Coupler with valve, Male Thread

Anodised aluminium, nickel-plated brass



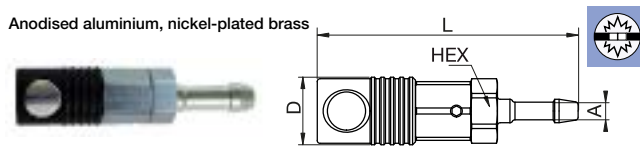
A		HEX	L	D
G1/4	18KPAW13APX	20	71.4	23
G3/8	18KPAW17APX	20	71.4	23
G1/2	18KPAW21APX	22	75.4	23



Self-Venting System

18KPTF Coupler with valve, Hose Barb

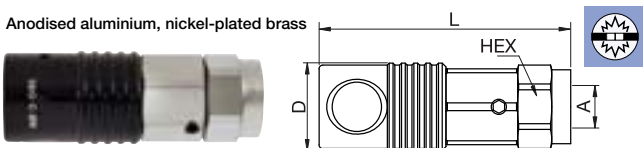
Anodised aluminium, nickel-plated brass



A		HEX	L	D
6	18KPTF06APX	20	88.9	23
8	18KPTF08APX	20	88.9	23
9	18KPTF09APX	20	88.9	23
13	18KPTF13APX	20	93.4	23

18KPIW Coupler with valve, Female Thread

Anodised aluminium, nickel-plated brass



A		HEX	L	D
G1/4	18KPIW13APX	20	66.4	23
G3/8	18KPIW17APX	20	67.4	23
G1/2	18KPIW21APX	24	70.4	23

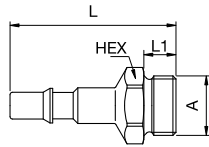
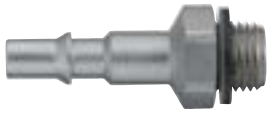


Self-Venting System



18SFAW Plug without valve, Male Thread

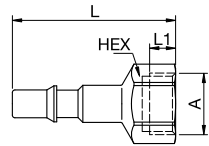
Nickel-plated steel



A			HEX	L	L1
G1/4	18SFAW13SXN	9087 18 13	17	41	9
G3/8	18SFAW17SXN	9087 18 17	19	41	9

18SFIW Plug without valve, Female Thread

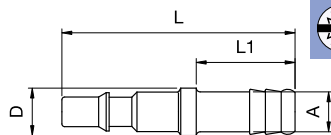
Nickel-plated steel



A			HEX	L	L1
G1/4	18SFIW13SXN	9086 18 13	17	43	9
G3/8	18SFIW17SXN	9086 18 17	19	44	9

18SFTF Plug without valve, Hose Barb

Nickel-plated steel



A			L	L1	D
6	18SFTF06SXN	9085 18 06	59	25	12
8	18SFTF08SXN	9085 18 08	59	25	12
10	18SFTF10SXN	9085 18 10	59	25	12
13	18SFTF13SXN		59	25	12