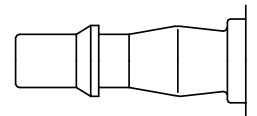




British industrial profile. Coupling system with single-hand operation. High Flow valve for optimum flow and low pressure drop. Robust coupling in slim design mainly for pneumatic applications. The steel sleeve counters oscillating forces. The high insertion depth guarantees by an optimised plug guidance.

- Available on request:
  - with additional end connections
  - other seals for different temperature ranges and fluids



British Profile

Dust Protections (P. 357)  
for Coupling Part.-No. SK23S

## KA Single Shut-Off

**Working Pressure\*:**  
up to 35 bar

**Material:**

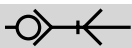
- Coupling: Nickel plated brass / steel
- Plug: Nickel plated steel
- Seals: NBR

**Working Temperature:**  
-20°C up to +100°C (NBR)

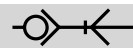
**Flow Rate Air:**  
850 l/min.  
inlet pressure 6 bar, pressure drop 0.5 bar

**Flow Rate Water:**  
12 l/min.  
pressure drop 0.5 bar

\* maximum static working pressure with design factor 4 to 1.



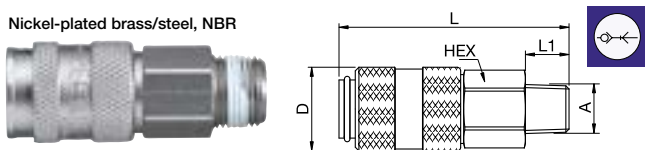
Single Shut-Off



Single Shut-Off

## 19KAAK Coupler with valve, Male Thread

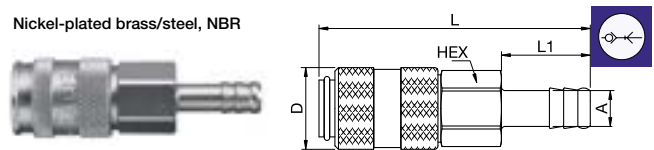
Nickel-plated brass/steel, NBR



| A    |             |            | HEX | L  | L1 | D    |
|------|-------------|------------|-----|----|----|------|
| R1/4 | 19KAAK13MPN | 9105 19 13 | 19  | 63 | 12 | 23,5 |
| R3/8 | 19KAAK17MPN | 9105 19 17 | 19  | 62 | 12 | 23,5 |
| R1/2 | 19KAAK21MPN |            | 22  | 68 | 17 | 23,5 |

## 19KATF Coupler with valve, Hose Barb

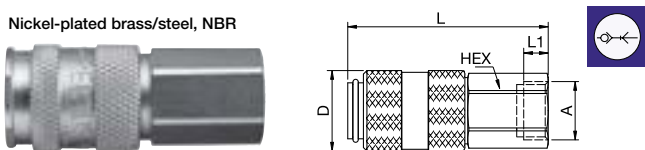
Nickel-plated brass/steel, NBR



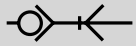
| A  |             |            | HEX | L  | L1 | D    |
|----|-------------|------------|-----|----|----|------|
| 6  | 19KATF06MPN | 9123 19 06 | 19  | 76 | 25 | 23,5 |
| 8  | 19KATF08MPN |            | 19  | 76 | 25 | 23,5 |
| 10 | 19KATF10MPN |            | 19  | 76 | 25 | 23,5 |
| 13 | 19KATF13MPN |            | 19  | 76 | 25 | 23,5 |

## 19KAIW Coupler with valve, Female Thread

Nickel-plated brass/steel, NBR



| A    |             |            | HEX | L  | L1 | D    |
|------|-------------|------------|-----|----|----|------|
| G1/4 | 19KAIW13MPN | 9114 19 13 | 19  | 58 | 9  | 23,5 |
| G3/8 | 19KAIW17MPN |            | 19  | 58 | 9  | 23,5 |
| G1/2 | 19KAIW21MPN |            | 24  | 60 | 12 | 23,5 |

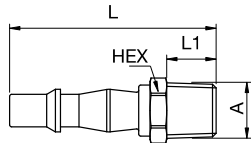


Single Shut-Off



## 19SFAK Plug without valve, Male Thread

Nickel-plated steel



A

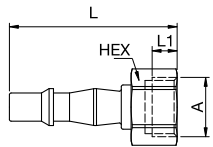


HEX L L1

|      |             |            |    |    |    |
|------|-------------|------------|----|----|----|
| R1/4 | 19SFAK13SXN | 9084 19 13 | 14 | 50 | 12 |
| R3/8 | 19SFAK17SXN |            | 17 | 50 | 12 |

## 19SFIW Plug without valve, Female Thread

Nickel-plated steel



A

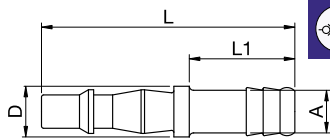


HEX L L1

|      |             |  |    |    |   |
|------|-------------|--|----|----|---|
| G1/4 | 19SFIW13SXN |  | 17 | 46 | 9 |
| G3/8 | 19SFIW17SXN |  | 19 | 47 | 9 |

## 19SFTF Plug without valve, Hose Barb

Nickel-plated steel



A



L L1 D

|    |             |            |    |    |    |
|----|-------------|------------|----|----|----|
| 6  | 19SFTF06SXN |            | 60 | 25 | 12 |
| 8  | 19SFTF08SXN |            | 60 | 25 | 12 |
| 10 | 19SFTF10SXN | 9085 19 10 | 60 | 25 | 12 |