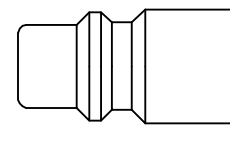




Safety coupling with a self-venting system for ISO 6150 B plug profile. Self-venting takes place during disconnection – no risk of pressurised hoses being tossed around. When the Push-Button is pressed for the first time, air is relieved from the coupling but the plug in the coupling remains locked. The plug is only disconnected when the Push-Button is pressed for the second time. System fulfils the requirements of ISO4414 – increased safety standards in the work place. DIN EN 983. Coupling body is 360° rotating so Push-Button is visible in any position



ISO 6150 B Profile



**Working Pressure\*:**  
up to 12 bar

**Material:**

- Coupling: Anodised Aluminium, Nickel plated brass
- Plug: Nickel plated steel
- Seals: NBR

**Working Temperature:**

-20°C up to +100°C (NBR)

**Flow Rate Air:**

1.970 l/min.

inlet pressure 6 bar, pressure drop 0.5 bar

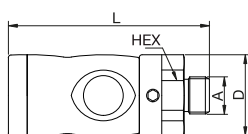
\* maximum static working pressure with design factor 4 to 1.



## Self-Venting System

### 30KPAW Coupler with valve, Male Thread

Anodised aluminium, nickel-plated brass



HEX L D

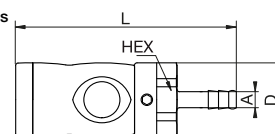
G1/4	<b>30KPAW13APX</b>	27	71.7	29
G3/8	<b>30KPAW17APX</b>	27	70.7	29
G1/2	<b>30KPAW21APX</b>	27	73.7	29



## Self-Venting System

### 30KPTF Coupler with valve, Hose Barb

Anodised aluminium, nickel-plated brass

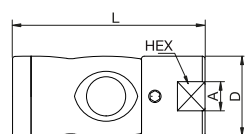


HEX L D

8	<b>30KPTF08APX</b>	27	86.7	29
10	<b>30KPTF10APX</b>	27	86.7	29

### 30KPIW Coupler with valve, Female Thread

Anodised aluminium, nickel-plated brass



HEX L D

G1/4	<b>30KPIW13APX</b>	23	69.7	29
G3/8	<b>30KPIW17APX</b>	23	71.7	29
G1/2	<b>30KPIW21APX</b>	27	73.7	29

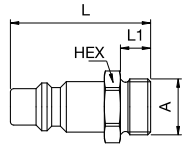


## Self-Venting System



### 30SAW Plug without valve, Male Thread

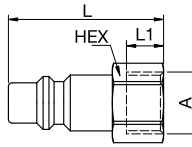
Nickel-plated steel



A			HEX	L	L1
G1/4	<b>30SAW13SXN</b>	<b>9087 30 13</b>	17	42	9
G3/8	<b>30SAW17SXN</b>	<b>9087 30 17</b>	19	42	9
G1/2	<b>30SAW21SXN</b>	<b>9087 30 21</b>	24	46	12

### 30SFIW Plug without valve, Female Thread

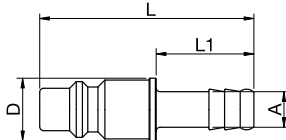
Nickel-plated steel



A			HEX	L	L1
G1/4	<b>30SFIW13SXN</b>	<b>9086 30 13</b>	17	40	10
G3/8	<b>30SFIW17SXN</b>	<b>9086 30 17</b>	19	42	10
G1/2	<b>30SFIW21SXN</b>	<b>9086 30 21</b>	24	43	12

### 30SFTF Plug without valve, Hose Barb

Nickel-plated steel



A			L	L1	D
8	<b>30SFTF08SXN</b>	<b>9085 30 08</b>	55	25	16
10	<b>30SFTF10SXN</b>	<b>9085 30 10</b>	55	25	16