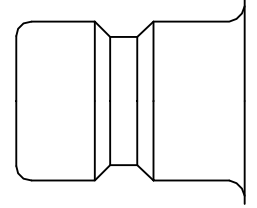




German industrial profile for compressed air applications. High Flow valve for optimum flow and low pressure drop. Robust structure, optimised with respect to size and performance. The collar design minimises damage to the valve body.

- Available on request:
  - with additional end connections
  - other seals for different temperature ranges and fluids



German Profile



**KA** Single Shut-Off

**Working Pressure\*:**  
up to 35 bar

**Material:**

- Coupling: Nickel plated brass
- Plug: Nickel plated steel
- Seals: NBR

**Working Temperature:**  
-20°C up to +100°C (NBR)

**Flow Rate Air:**  
6.500 l/min.  
inlet pressure 6 bar, pressure drop 0.5 bar

**Flow Rate Water:**  
65 l/min.  
pressure drop 0.5 bar

**KB** Double Shut-Off

**Working Pressure\*:**  
up to 35 bar

**Material:**

- Coupling: Nickel plated brass
- Plug: Nickel plated brass
- Seals: NBR

**Working Temperature:**  
-20°C up to +100°C (NBR)

**Flow Rate Air:**  
4.300 l/min.  
inlet pressure 6 bar, pressure drop 0.5 bar

**Flow Rate Water:**  
52 l/min.  
pressure drop 0.5 bar

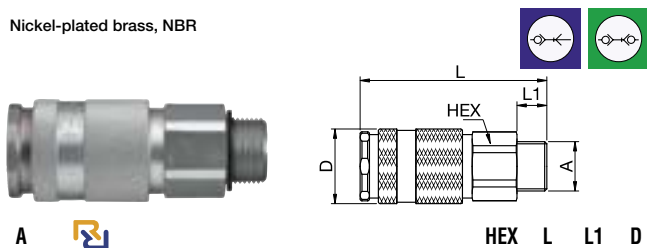
\* maximum static working pressure with design factor 4 to 1.

Single Shut-Off / Double Shut-off

Single Shut-Off

**57KBAW** Coupler with valve, Male Thread

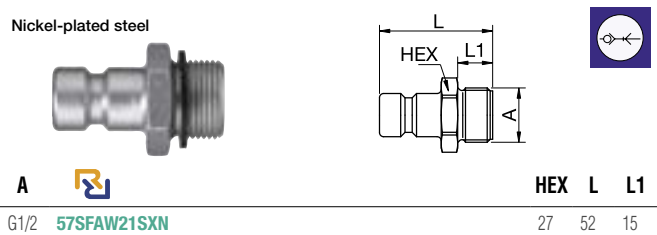
Nickel-plated brass, NBR



A	HEX	L	L1	D
G1/2 57KBAW21BPN	34	98	12	40
G3/4 57KBAW26BPN	34	100	16	40

**57SFAW** Plug without valve, Male Thread

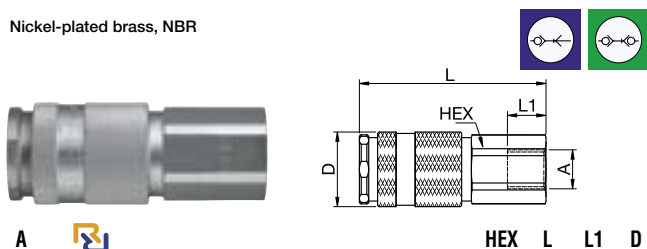
Nickel-plated steel



A	HEX	L	L1
G1/2 57SFAW21SXN	27	52	15

**57KBIW** Coupler with valve, Female Thread

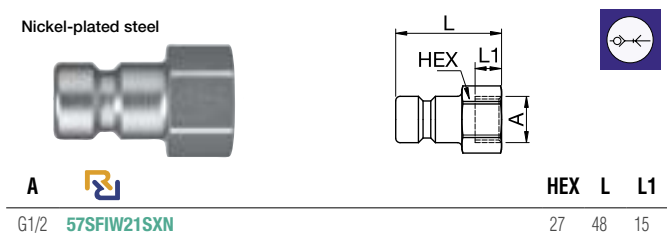
Nickel-plated brass, NBR



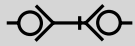
A	HEX	L	L1	D
G1/2 57KBIW21BPN	34	100	19	40
G3/4 57KBIW26BPN	34	100	16	40

**57SFIW** Plug without valve, Female Thread

Nickel-plated steel



A	HEX	L	L1
G1/2 57SFIW21SXN	27	48	15

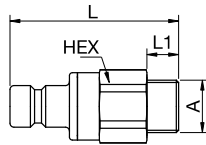


Double Shut-off



## 57SBAW Plug with valve, Male Thread

Nickel-plated brass, NBR



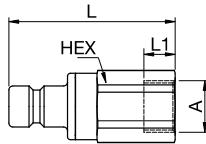
A

HEX L L1

G1/2	57SBAW21MPN	34	83	12
G3/4	57SBAW26MPN	34	85	16

## 57SBIW Plug with valve, Female Thread

Nickel-plated brass, NBR



A

HEX L L1

G1/2	57SBIW21MPN	34	85	19
G3/4	57SBIW26MPN	34	85	16