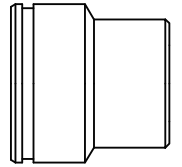




The 608 series (French series) has been specially developed for cooling in the field of plastic injection machines / moulds. Using vertical plug inserts, the cooling connection can be installed directly in the mould / machine, so the external contour has no protruding extension components. This allows easy and safe handling during the work process and prevents damage to the coupling and the mould. This system is supplied as a "straight-through coupling" with no valves. Coding of the in and outlets can be represented by simple fixing of the coloured clips / rings onto the coupling and plug.

The use of the locking balls means that an optimum grip of the plug connection is guaranteed, even with forces that are applied laterally. The simple unlocking mechanism, which is optimised by knurling at the end of the sleeve, can be operated by pulling back once on the sleeve.



French Profile



KF Straight-Through

Working Pressure*:
up to 20 bar

Material:

- Coupling: Nickel plated brass
- Plug: Nickel plated brass
- Seals: FKM

Working Temperature:
-15°C up to +200°C (FKM)

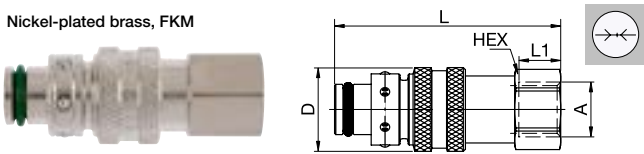
Flow Rate Water:
32 l/min.
pressure drop 0.5 bar

* maximum static working pressure with design factor 4 to 1.

→← Straight-Through

608KFIW Coupler without valve, Female Thread

Nickel-plated brass, FKM

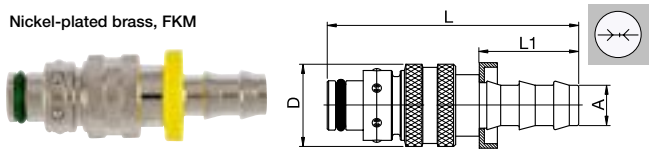


A	HEX	L	L1	D	
G1/4	608KFIW13MVN	17	54	10	20

→← Straight-Through

608KFTP Coupler without valve, Push-Lok

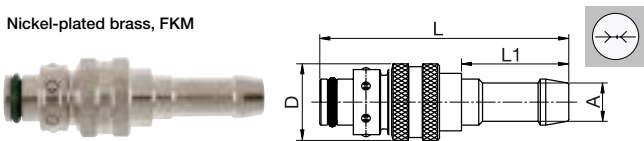
Nickel-plated brass, FKM



A	L	L1	D	
10	608KFTP10MVN	61	24	20
13	608KFTP13MVN	66.5	28	20

608KFTF Coupler without valve, Hose Barb

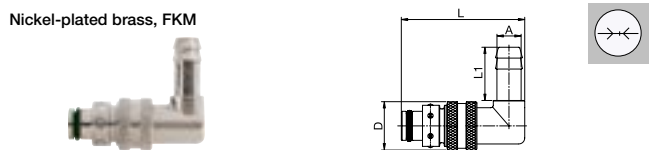
Nickel-plated brass, FKM



A	L	L1	D	
8	608KFTF08MVN	65	28	20
10	608KFTF10MVN	65	28	20
12	608KFTF12MVN	65	28	20

608KFTR Coupler without valve, Hose Barb 90°

Nickel-plated brass, FKM



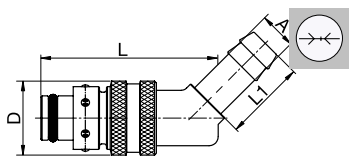
A	L	L1	D	
10	608KFTR10MVN	51	20	20
12	608KFTR12MVN	51	20	20



Straight-Through

608KFTH Coupler without valve, Hose Barb 45°

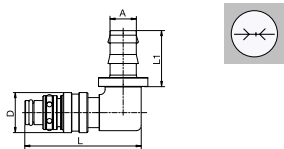
Nickel-plated brass, FKM



A		L	L1	D
10	608KFTH10MVN	51	20	20
12	608KFTH12MVN	51	20	20

608KFPR Coupler without valve, Push-Lok 90°

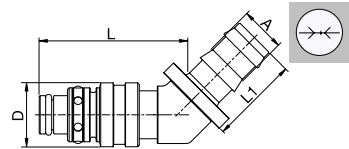
Nickel-plated brass, FKM



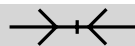
A		L	L1	D
10	608KFPR10MVN	54.5	24	20
13	608KFPR13MVN	58	28	20

608KFPH Coupler without valve, Push-Lok 45°

Nickel-plated brass, FKM



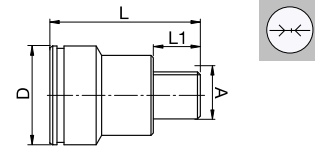
A		L	L1	D
10	608KFPH10MVN	44.5	24	20
13	608KFPH13MVN	47	28	20



Straight-Through

608SFA Plug without valve, Male Thread

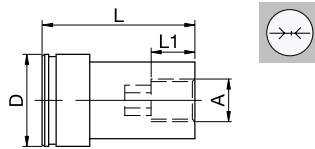
Nickel-plated brass



A		HEX	L	L1	L2	D
M10 x 1	608SFAM10MXN	6	32	10		21
G1/8	608SFAW10MXN	6	32	10		21
G1/4	608SFAW13MXN	8	33	12		21
G3/8	608SFAW17MXN	8	24	13		21
R1/8	608SFAR10MXN		34	11	33	22
G1/4	608SFAR13MXN		37	13	33	22
G3/8	608SFAR17MXN		37	13	33	22
R1/8	608SFAH10MXN		33	10.5		22
R1/4	608SFAH13MXN		35	13		22

608SFIW Plug without valve, Female Thread

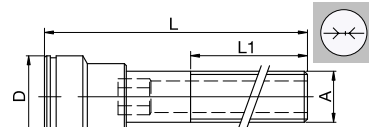
Nickel-plated brass



A		HEX	L	L1	D
G1/8	608SFIW10MXN	6	35	10	21
G1/4	608SFIW13MXN	8	40	14	21

608VN Extension Plug, Male Thread

Nickel-plated brass



A		HEX	L	L1	D
G1/8	608VN1005MXN	6	50	28	21
G1/8	608VN1010MXN	6	100	60	21
G1/8	608VN1015MXN	6	150	60	21
G1/4	608VN1305MXN	8	50	28	21
G1/4	608VN1310MXN	8	100	60	21
G1/4	608VN1315MXN	8	150	60	21

DHX608 Color Clip for Couplings and Plugs

POM



A		Color
Clip for Coupling	DHX608KXXKR	RED
Clip for Coupling	DHX608KXXKB	BLUE
Clip for Coupling	DHX608KXXKS	BLACK
Clip for Plug	DHX608SXXKR	RED
Clip for Plug	DHX608SXXKB	BLUE
Clip for Plug	DHX608SXXKS	BLACK