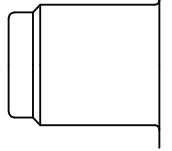




Modular integrated coupling and plug for installation in multi-coupling systems. High resilience, low coupling forces and great resistance to liquid media due to the special coating of the coupling body



KF Straight-Through

Working Pressure*:
up to 15 bar

Material:

- Coupling: Nickel plated brass, PTFE coated steel
- Plug: Nickel plated brass, PTFE coated steel
- Seals: FKM

Working Temperature:
-15°C up to +100°C (FKM)

Flow Rate Water:
46 l/min.
pressure drop 0.5 bar

KL Dry-break

Working Pressure*:
up to 15 bar

Material:

- Coupling: Nickel plated brass, PTFE coated steel
- Plug: Nickel plated brass, PTFE coated steel
- Seals: FKM

Working Temperature:
-15°C up to +100°C (FKM)

Flow Rate Water:
20 l/min.
pressure drop 0.5 bar

* maximum static working pressure with design factor 4 to 1.



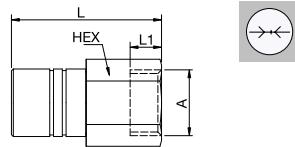
Straight-Through



Dry-Break

93KFIW Coupler without valve, Female Thread

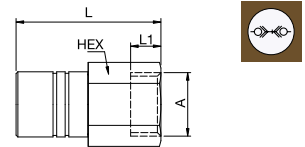
Nickel-plated brass, Steel PTFE coated, FKM



DN	A	HEX	L	L1
8.1	G1/2	93KFIW21SVN	24	48 12

93KLIW Coupler with valve, Female Thread

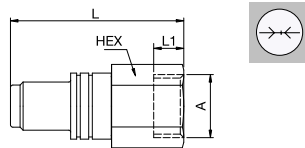
Nickel-plated brass, Steel PTFE coated, FKM



DN	A	HEX	L	L1
8.1	G1/2	93KLIW21SVN	24	48 12

93SFIW Plug without valve, Female Thread

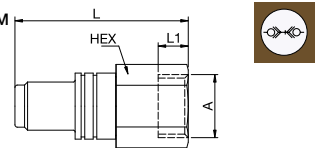
Nickel-plated brass, Steel PTFE coated



DN	A	HEX	L	L1
8.1	G1/2	93SFIW21SXN	24	57.5 12

93SLIW Plug with valve, Female Thread

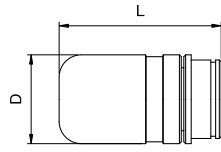
Nickel-plated brass, Steel PTFE coated, FKM



DN	A	HEX	L	L1
8.1	G1/2	93SLIW21SVN	24	57.5 12

94KX Locking Coupling

Nickel-plated steel



L D

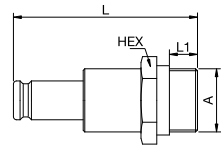
94KX

45 25



94SX Locking Bolt

Nickel-plated steel



HEX L L1

94SX

24 58 13