

METERING AND SERVICES IRELAND

Hanley Controls Clonmel



*Hanley Controls Clonmel
Gortnafleur, Clonmel
Co. Tipperary
Ireland*

*tel: + 353 52 6122722
fax: +353 52 22024
email: info@hccl.ie
web: www.hccl.ie*



About Hanley Controls (Clonmel) Ltd.

Hanley Controls Clonmel Ltd. commenced trading in 1981 and is located at Gortnafleur, Clonmel, Co. Tipperary.

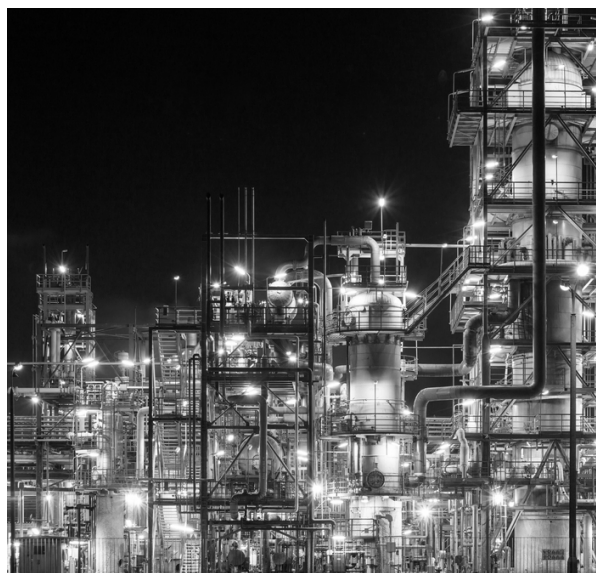
We are primarily a Trading Company specialising in process measurement and control instrumentation, mechanical valves and pipe fittings. We also have a manufacturing section producing metering units, pipe assemblies, air distribution manifolds and specialist control panels.

We serve a wide range of customers including chemical, pharmaceutical, food & beverage, power, water & waste-water, manufacturing, R&D, Laboratory & utilities. Hanley Controls are a privately owned Irish Company. Hanley Controls Clonmel Ltd. are an ISO9001 certified company.

Metering & Services Department

Our Utility Services Department specialises in Water Metering, Water Leak & Humidity Detection Systems, Gas Measuring and Pressure Control, Heat Metering and calculation, Fire Suppression Solutions and Gas Detection Solutions. Our Partner Brands include Itron, RMG by Honeywell, Stat-X, Nobel Fire Systems, Micronics, Dungs, and IGD Gas Detection.

Hanley Controls Clonmel Ltd
specialise in Process
Measurement
and Control Instrumentation,
Mechanical Valves,
Pneumatics and Pipe
Fittings, Utility Metering , Gas
Detection and Fire
Suppression.



Gastite

The Flexible Alternative CSST supplies natural gas or liquefied petroleum gas (LPG gas) to appliances. Simple hand tools such as tubing cutters, wrenches and utility knives are all that is needed to work with Gastite components. Gastite is a reliable, cost-effective system that can be installed in all modes of construction, residential, commercial and industrial, new construction and retrofits. Featuring its patented multi-point seal, the XR2 fitting's sealing surface does not sit on the cut end of the tubing, so even the most unsightly cut will yield a tight seal. The XR2 fitting is also reduced in size and requires minimal torque, making the installation of larger sizes considerably easier. With no o-rings or gaskets, the reusable brass components provide a reliable metal to metal installation. Available from DN15 to DN50.

Features & Benefits

- . Flexibility for faster installation
- . Pre-marked by the meter
- . Lightweight, making easy for transport and installation
- . Custom lengths and job-spec accessories easily obtained by a phone call
- . Download our free Gastite Mobile Sizing App



The system is approved under the BS Kitemark number KM587681 and the approval was made in accordance with BS EN15266. We offer free training nationwide from our certified RGI installer. Call Paul or Noel on 052 -6122722.

Gas Skid & Module



Gas Skid & Metering Module

We design, install and service pressure reducing gas skid and metering modules.



Our Utility Services Department specialises in Water Metering, Water Leak & Humidity Detection Systems, Gas Measuring and Pressure Control, Heat Metering and calculation, Fire Suppression Solutions and Gas Detection Solutions. Our Partner Brands include Itron, RMG by Honeywell, Stat-X, Nobel Fire Systems, Micronics, Dungs, and IGD Gas Detection.



G4 - G40 Diaphragm Gas Meters

Compact, high accuracy commercial meter

- Robust, maintenance free meter
- Mid approved
- High resistant corrosion protection
- Low frequency transmitter retrofit
- Natural gas, lpg and other non-corrosive gasses
- Mid Approved



Mz Quantometer Turbine gas meter

- DN50 to DN200
- Flow rate up to 2500 m³/h
- Pressure range up to 40 bar
- Equipped as standard with cyble target
- Options available: low & high frequency transmitters, thermowell, oil pump, version for aggressive gasses etc.



Tz fluxi 2000 Turbine gas meter

- DN50 to DN500
- Reduced pressure loss for low pressure network
- Excellent high pressure behaviour
- IP67 protection of the totaliser
- Mid approved



Delta Rotary Meter Volumetric gas meter

- DN50 to DN150
- Flow rate 0.4 m³/h to 1000 m³/h
- Available in aluminium, ductile iron or steel for all applications
- Excellent metrological stability attested by customers over the years
- No influence of installation conditions nor stop-and-go flow rate on the metrology
- Mid Approved



Cyble Sensor Atex

The cyble sensor atex has been designed specifically for gas utilities needing to connect electronic devices with a 1f pulse input, such as a volume converters to a gas meter. It can be mounted at any time onto any Itron Meter equipped with an Itron totaliser.



Gas Pressure Regulators

- DN15 TO DN150
- Quick response to rapid load changes
- Installation at any angle
- Wide operational pressure range
- Complies generally with specification BG/PRS 33 & EN88

Gas Detection



Tocsin 625

- Fast, effective gas detection system controller
- Flexible power supply options
- Relay outputs, RS485 and 4-20ma Outputs as standard
- Controls up to 8 devices as gas detectors or I/O modules
- LCD display with multi-colour backlight, flashes red
- On alarm, yellow on fault Etc.
- Battery back up option



TOC 30A Gas Detector

- Standard 2 gang pattress mount
- Pre-calibrated/In-service calibration possible
- Replaceable sensor
- Addressable interface
- Dado mount or wall mount

Applications

- Boiler Rooms
- Laboratories
- Industrial
- Educational

TOC 30 will cover Flammable Gas, Natural + LPG Carbon Monoxide, Oxygen and Nitrous Oxide.

Installation service available on request.



Gas & Water Solenoid Valves

- Can be controlled by pressure switch, thermostat, etc .
- Can be equipped with a flow regulator and adjustable slow opening kit
- EC certified according to EN 161
- In conformity with the 94/9/EC Directive (ATEX Directive)
- In conformity with the 2009/142/EC Directive (Gad Directive)

Manual Valves



We stock an extensive range of Gas and General Purpose Process Valves including Stainless Steel Flanged Ball Valves, Screwed Ball Valves, Cast Iron Butterfly Valves and Check Valves.

Donkin

Donkin Valves



- Mk III Series 555 cast iron softseal valve
- Full double block and bleed facility with pressure relieving plug
- Retrofit clip on indicator reduces stock holding costs because one valve is suitable for above and below ground
- Soft seal positive shut off, metal to metal secondary seal
- Fasteners covered in hot melt EVA copolymer to provide enhanced corrosion protection and anti tamper feature
- Produced in accordance with the Pressure Equipment Directive and is CE marked



Aquadis+ Composite Version

- DN15 to DN40
- Inline or manifold version
- High efficiency
- Long lasting robustness
- Permanent readability



Flowstar

- DN40 to DN150
- DN65 to DN150 come equipped with mobile flanges
- Low flow accuracy
- Peak flow capacity
- High engineered materials



Cyble Sensor

- Suits various remote reading applications
- Consumption recording
- Flow analyses
- Frequency/current conversion
- Automatic control



Woltex

- DN50 to DN500
- Interchangeable approved mechanisms without re-calibration
- Excellent resistance to corrosion with epoxy coating
- Hermetically sealed register
- Extended range approval



Badger Modmag M2000

- DN6 to DN2000
- High accuracy ± 0.2 of m.v.
- Flow range 0.03 - 12m/s
- Integrated data logger
- LCD Display



Siemens Electromag 5100 W

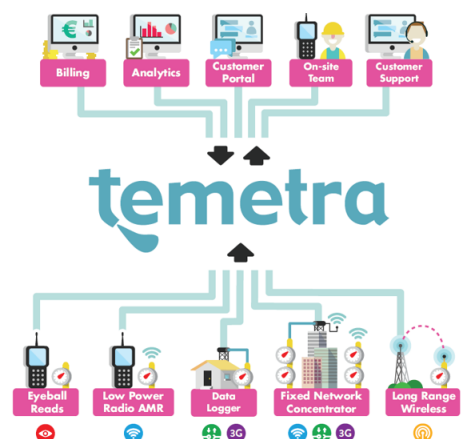
- DN15 to DN1200/2000
- EPDM liner with drinking water approval
- Suitable for direct burial and constant flooding
- Easy commissioning, SENSORPROM unit automatically uploads calibration values and settings
- Designed to meet ground, drinking or waste water, sewage or sludge applications

Meter Data Collection

Temetra supports a wide variety of AMR and AMI technology, giving you choice of best available from a variety of leading device vendors.

With access from anywhere with a web browser, we scale from small meter networks with a handful of meters, all the way to large scale utilities with over 1 million meters using a mixture of eyeball, AMR and AMI to collect index data.

Built using modern web technology and user experience, we provide visualization of your meter data from single meters to aggregate analytics.



Kemper Valves & Hygiene Systems

KEMPER Eta-Therm floor regulation valve (2 versions)



Automatic valve for hydraulic alignment of circulation circuits in the floor area

- Automatic finest regulation valve with minimum flow through valves $k_{min}=0.05$, $k_{max}=0.4$
- Medium-contacting parts made of gunmetal
- Multifunctional stop and regulation head-part
- `Blind` valve presents for concealed installation made possible through rasterization
- Available with change stopper and has integrated cleaning function

KEMPER MultiFix circulation regulating valve

- With isolation and drain point for maintenance work
- Including thermometer and optionally available with Pt1000 temperature sensor
- With self-lubricating EPDM lip seals that can be replaced under pressure
- Completely made of bronze
- Stagnation free internals



KEMPER Pressure Reducing Valve

- Internal parts made of gunmetal, stainless steel and plastic
- Outlet pressure adjustable on lockable knurl with pressure scale
- Stainless steel mesh at inlet
- For any installation position
- Plugged port for optional manometer



KEMPER Multi-Therm circulation regulating automatic valve

- Thermostatic-controlled regulation of the finest volume flows
- Stopping and temperature monitoring in one head-part
- Stagnant-zone-free
- Optionally available with electronic temperature sensor for building control systems
- Optimised emptying facility with a rotatable emptying valve



KEMPER KHS Isolation valve

- Supports the frequent water change when installed with KHS
- Use to avoid stagnation in main pipes of existing systems
- Available in 230v and 24v versions/flow limited or unlimited
- Also available with a servodrive with or without the spring return function



KEMPER Leak Detection System

- Secure registration of a leak by using a water sensor with immediate drinking water system shutoff
- Space saving, easily retrofit package for all types of buildings in inventory as well as new buildings
- Timer programming facilities automatic security when leaving the building or during long absences
- Maximum flow isolating ball without concussion through slow closing/opening according to EN13828
- Acoustic and visual alarm to the leak controller reports a leak and can be forwarded to a BMS



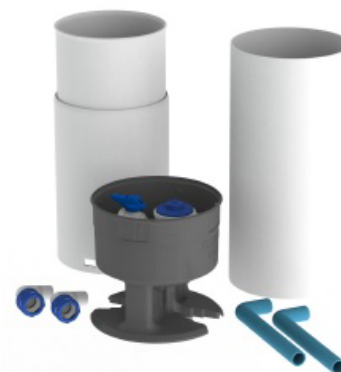
KEMPER frost tap

- Safer protection from frost damage through automatic draining after each activation
- Hygienically safe – No stagnation volumes, no heated up water
- Only one installation length for all conventional depths(wall thickness up to 415mm)
- Continuous adaption to outdoor wall thickness(from 150-655mm)
- Above average drainage capacity of 40 L per min and 1 bar flow pressure



FLEXIFIT METER BOX

- First self-draining meter box
- Push-fit connections with 180 degrees adjustable outlets
- Telescopic tube for easy fitting/no waste
- Comes with plastic or metal lids
- WRAS approved



MULTIFIT SELF-TAPPING FERRULE STRAP

- Comes with gunmetal or acetal head
- Marine grade stainless steel strap designed for long lasting
- The 90-125mm strap cover 3 different size pipe
- 6 pipe sizes covered by just 3 straps
- All straps have pushfit outlets

Oil Metering

Oil Meters



CONTOIL FUEL OIL METERS

- State of the art design with electronic counter, flow indication, analogue and digital output signals and limiting value switch
- Reliable monitoring and flexible control of the system
- Independent of viscosity and temperature
- Accurate measurements
- Cost-effective metering point



CF-ULTRAMAXX V ULTRASONIC COMPACT THERMAL ENERGY METER

- Versions with 2 indexes for use in combined heating and cooling applications
 - Advanced features for field data analysis
 - Removable calculator
 - Can be used for the measurement of all relevant billing data in heating/cooling systems.
- Multiple communication options, MBus, MBus PS, WM pulse input, RF Radio and Repetition E & V

CF ECHO II ULTRASONIC COMPACT HEAT AND COOLING METER

- DN15 to DN50
- Capable of measuring from Qp 0.6 to Qp 15m³/h
- Ease of installation
- Pre equipped for communication
- Easy reading/multifunctional display



AXONIC STATIC FLOW METER FOR THERMAL ENERGY C&I APPLICATIONS

- DN65 to DN100
- High accuracy and repeatability
- Can be combined with CF51 or CF55 calculators
- Equipped with mobile flanges for easy installation
- High pressure versions up to PN40
- Various choice of lengths



CF51 HEAT METER CALCULATOR

- Temperature range of 0 to 180 degrees c
- Plug & Play communication option boards
- Multifunctional display
- Long life battery
- Upgrade with option boards



ULTRAFLO U1000 CLAMP METER

- OD25mm to OD115mm
- Accuracy of +/- 1-3% of flow reading for >0.3m/s
- Water Temp range of 0 to 85 degrees C
- Easy to install
- Clamp on sensors
- Can be installed on steel, plastic or copper



Zurich Slim Line Heating System

ZURICH SLIM LINE RANGE

Flat-station with domestic hot water and indirect heating – twin plate

- 3 to 22 ltrs/min instantaneous clean and hygienic hot water
- Low return temperatures through primary modulator controlled direct hot water are ideal for boilers, heat pumps, district heating and solar plants
- Direct hot water capacity up to 55 kw/Heating capacity up to 15 kw
- Only 110mm in dept
- Insulated heat exchanger, pipes and back plate





NOBEL FIRE SYSTEMS

Stat-X



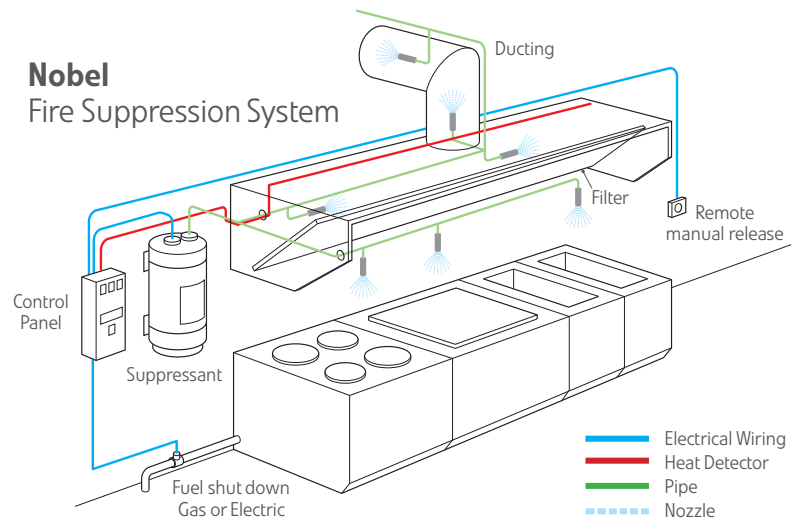
FIRE SUPPRESSION SYSTEMS/ELECTRICALLY OPERATED UNITS

- Significantly more effective than alternative extinguishing agents
- Ease of installation/no pressure vessels, piping or expensive installation manpower

- Listed for Class A, B, C fires by UL, ULC, CSIRO, ECB, and many others
- Post fire clean up is minimal/ aerosol suspends in air for quick and easy venting after discharge
- Also available for wind turbine protection, data protection and GP-X ATM protection system



Nobel Fire Suppression System



K-SERIES

COMMERCIAL KITCHEN FIRE SUPPRESSION SYSTEM

- Protects the direct fire appliances and also the canopy, plenum, filtration and extract system
- All cylinders, pipework, fittings and nozzles are manufactured/installed in high grade stainless steel
- Electrically controlled/no mechanical moving parts
- Every system is designed following a comprehensive risk assessment
- Ultra efficient application of fire suppression to any appliance/area containing oils/grease/residual animal fats thus extinguishing the initial fire and preventing propagation of the fire to other areas



Hanley Controls Clonmel Ltd
Gortnafleur
Clonmel
Tipperary
Ireland

☎ tel: + 353 52 6122722
✉ email: info@hccl.ie
t @hanleycontrols
↗ www.hccl.ie