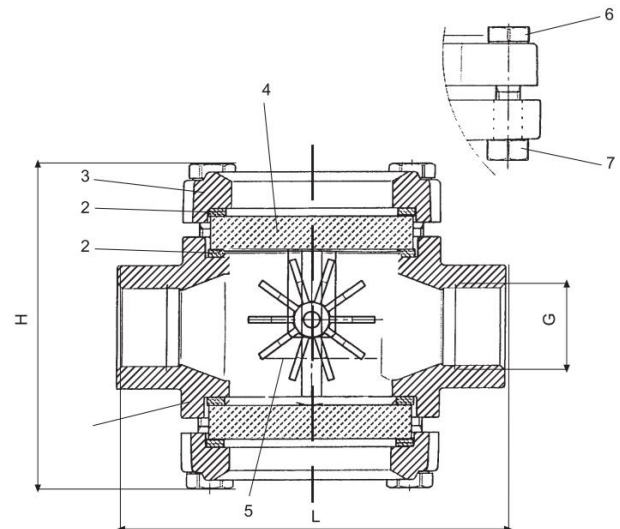


## Visual Flow Indicators

Visual flow indicators allow inspection of the passing liquid, they are suitable for water, oils, petrol and diesel. The propeller is coloured red for better visualization. They can be installed both vertically and horizontally to control low viscous transparent & opaque liquids, free of impurities.

### Feature

- Process connection threaded from 3/4" to 2"
- Body brass or bronze
- Nylon rotors
- Double Tempered glass window
- Temperature up to 120°C
- Pressure up to 16 bar
- Bidirectional
- Up to 25 bar max (depending on model)



### Material Specification

1. Body Bronze
2. Gasket Fibre
3. Cover Bronze
4. Window Tempered Glass
5. Spinner/s Moplen
6. Bolt Nickel Plated Steel
7. Nut Nickel Plated Steel

Part Number	Description	Thread size	Thread Type	Dim 'H'	Dim 'L'	Kg
LK/1316/20	DN20 Visual flow indicator with rotor	3/4"	BSPP	90mm	100	1.2
LK/1316/25	DN25 Visual flow indicator with rotor	1"	BSPP	92mm	107	1.3
LK/1316/32	DN32 Visual flow indicator with rotor	1 1/4"	BSPP	112mm	126	2.5
LK/1316/40	DN40 Visual flow indicator with rotor	1 1/2"	BSPP	118mm	137	2.8
LK/1316/50	DN50 Visual flow indicator with rotor	2"	BSPP	140mm	170	5

To be installed by suitably trained and qualified personnel. Any legal regulations or regulations issued by authorities must be observed during installation.