



Proudly manufactured in Clonmel

INSTRUMENT AIR MANIFOLDS LF, LG, & LH Series

Specifications & Ordering Guide



Gortnafleur, Clonmel, Co. Tipperary, Ireland, E91 A097, Tel: + 353 52 6122722,
www.hccl.ie



Specifications

Proudly manufactured in Clonmel

MANIFOLD BAR: Material: TP316L ASTM A312, Sch160 1" NB
 Inlet thread: 3/4" female / 1" male
 Finish: Mechanical Polish
 Origin: Western European Mill only



CERTIFICATION: PED 2014/68/EU
 ISO 9001 certified manufacturing facility

FUNCTION/ LEAK TEST: 8 bar (air)*
 *higher test pressures available on request

TRACEABILITY: Each bar is permanently etched with part no. & serial no. - all linked to an accompanying test cert




MANIFOLD TYPE	OUTLET VALVES	THREAD TYPE	WORKING PRESSURE	DESIGN PRESSURE
LF SERIES - standard (2/2)	1/4"	NPT	10 bar	16 bar
LG SERIES - venting (3/2)	1/4"	BSPB	8 bar	10 bar
LH SERIES - standard (2/2)	1/2"	NPT	10 bar	16 bar

SPECIALS - Custom configurations are available on request, please contact us with your requirements


MANIFOLD VALVES

Features: Lockable handle with blue sleeve


Material: ASTM A351 CF8M / PTFE



LF SERIES 2/2
OAL: 47mm



LG SERIES 3/2
OAL: 63mm



LH SERIES 2/2
OAL: 75mm

Proportions shown are correct - the valves were photographed beside each other

Use the **Part No. Configurator** to create your own bespoke product by adding airline fittings, isolating valves, filter regs etc.

Save time and money by ordering your manifolds complete with airline connections. We ensure that every manifold leaves our workshop fully tested and leak free



Proudly manufactured in Clonmel

Index

Page	
2	Specifications
4	LF & LG Series Part No. Configurator
5	LH Series Part No. Configurator
6	Typical Hook-up Drawing
7	LF5 Drawing
8	LFF10 Drawing
9	LFF20 Drawing
10	20 Way Stick Build Assembly Drawing
11	10 Way Manifold c/w Reg & Ball Valve Drawing
12	40 Way Hygienic Manifold Drawing
13	20 Way Manifold Enclosure Drawing
14	Typical Manifold Test cert
15	Hanley Controls PED Declaration
16	Hanley Controls ISO9001 Cert
17	Typical 3.1B Cert for Manifold Outlet Valves
18	Typical 3.1B Cert for Manifold Bar

Proudly manufactured in Clonmel

PART NO. CONFIGURATOR

Standard options shaded

1. Series

Standard - Single Side	LF
Standard - Double Sided	LFF
Venting - Single Side	LG
Venting - Double Sided	LGG

2. No. of Ways

10
12
4

3. Inlet Thread

3/4" BSP	12
3/4" NPT	30
1" BSP (Male)	31
1" NPT (Male)	30

4. Outlet Thread

1/4"	4
------	---

5. Outlet Valves

SS316 Ball Valve 2/2	B
SS316 Ball Valve 3/2*	V
Special / Other	S

*LG(G) Series only

6. Airline Connections

	Straight	Elbow
None		X
Legris LF3000 Push-fit Stud	1	1E
Legris LF3600 Push-fit Stud	2	2E
Legris LF3800 Push-fit Stud	3	3E
ALOK Compression metric SS	5	5E
ALOK Compression imperial SS	6	6E
Special Order		7


7. Mounting Blocks

Green Clamps incl. as standard	B
Options:	
Add galv plates & bolts	G
Add SS plates & bolts	S


8. Options / Extras

None	X
Parker P32 Reg 1/2" w/gauge	R
Parker P32 Filter Reg 1/2" w/gauge	F
Inlet Ball Valve 1/2"	V
Parker P33 Reg 3/4" w/gauge	L
Parker P33 Filter Reg 3/4" w/gauge	M
Inlet Ball Valve 3/4"	N
Special Order	Z


Legris LF3000
Nickel Brass/Plastic



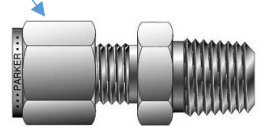
Legris LF3800
SS316L




Legris LF3800
SS316



Alok compression
SS316



Double sided LF manifold with options F & V



Ordering Examples

LF512-4B1BFV

Describes a 5 way single sided LF manifold c/w LF3000 straight studs, P32 filter reg & 1/2" isolating valve

LFF2012-4B1ESV

Describes a 20 way double sided LF manifold c/w LF3000 stud elbows, SS clamp accessories & 1/2" isolating valve

LGG1012-4V3ESX

Describes a 10 way double sided LG (venting) manifold c/w LF3800 stud elbows, & SS clamp accessories

Proudly manufactured in Clonmel

PART NUMBER CONFIGURATOR

1. Series: LH

2. No. of Ways: 3

3. Inlet Type: 12

4. Outlet Thread: 6

5. Outlet Valves: B

6. Airline Connections: X

7. Mounting Blocks: B

8. Options / Extras: V

1. Series	
Single Side	LH
Double Sided	LHH

3. Inlet Type	
3/4" BSP female	12
3/4" NPT female	30
1" NPT male	31
1" BSP male	32
1" ANSI 150 Flange*	33
1" PN10/16 Flange*	34
Special / Other	35

*screwed flange

4. Outlet Thread	
3/8"	6
1/2"	8

5. Outlet Valves	
BSP Ball Valve 2/2	B
NPT Ball Valve 2/2	N
Special / Other	S

6. Airline Connections		
	Straight	Elbow
None		X
Legris LF3000 Push-fit Stud	1	1E
Legris LF3600 Push-fit Stud	2	2E
Legris LF3800 Push-fit Stud	3	3E
ALOK Compression metric SS	5	5E
ALOK Compression imperial SS	6	6E
Special Order	7	

7. Mounting Blocks	
Green Clamps <i>incl. as standard</i>	B
Options: Add galv plates & bolts	G
Add SS plates & bolts	S

8. Options / Extras	
None	X
Inlet Ball Valve 3/4"	N
Inlet Ball Valve 1"	F
Special Order	Z

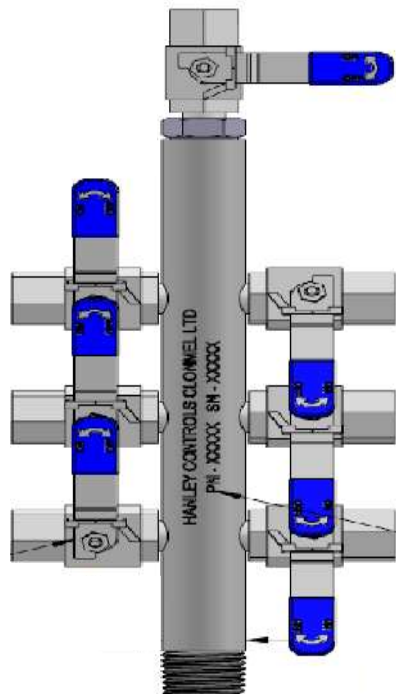
Ordering Examples

LH533-8BXBX

Describes a 5 way single sided LH manifold c/w 1" ANSI 150 inlet, 1/2" outlet valves

LH512-6B5SX

Describes a 5 way single sided LH manifold, 3/4" BSPP female inlet, metric Alok fitting on the 3/8" outlet valves





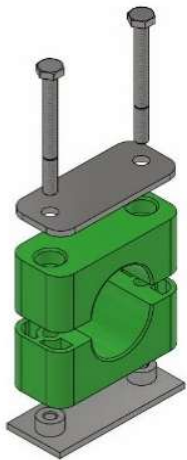
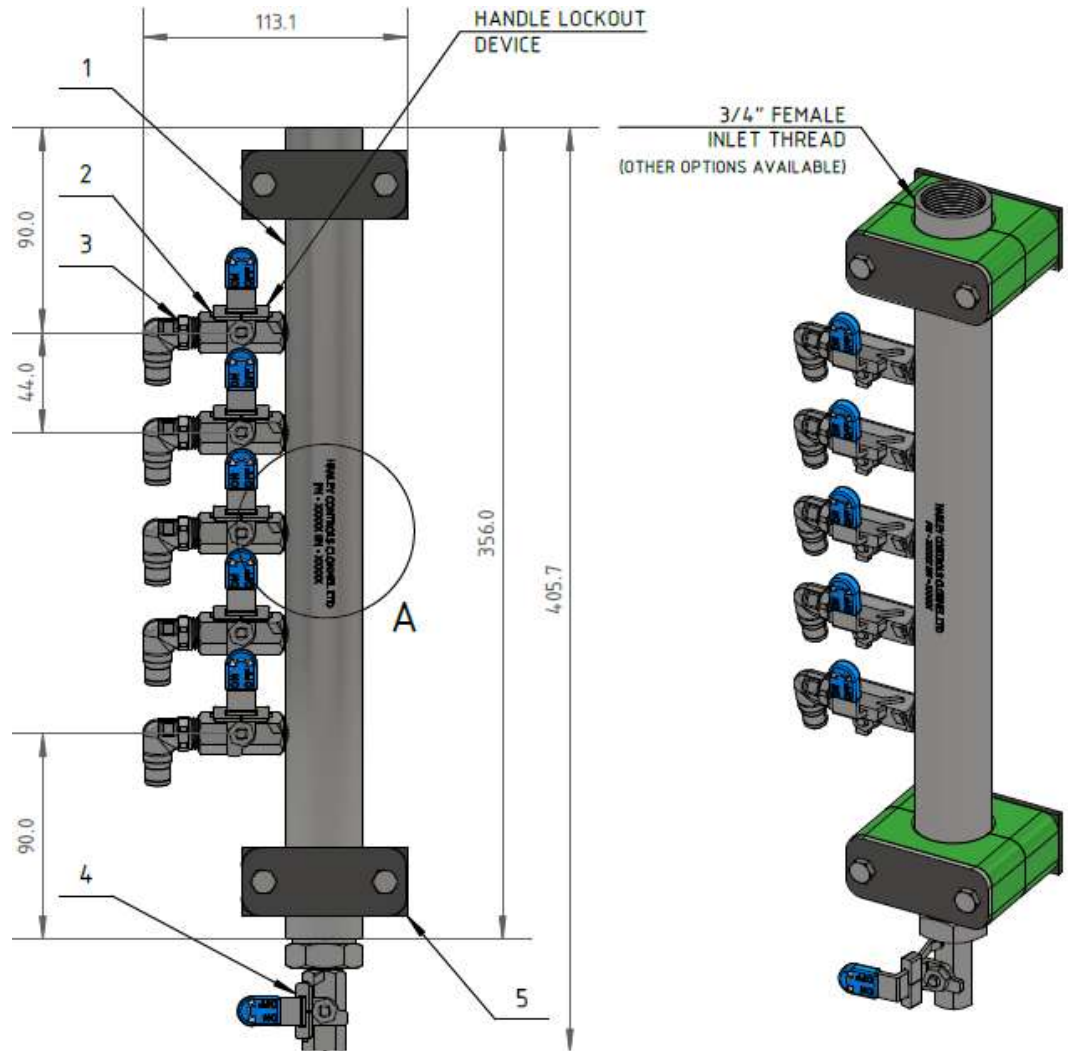
HANLEY CONTROLS

CLONMEL

Proudly manufactured in Clonmel

5 Way Manifold

c/w push-in elbow fittings



CLAMP COMPONENTS

- 2x POLYPROPYLENE CLAMP HALVES
- 1x SS 316 COVER PLATE
- 2x SS 316 M6 HEXAGON HEAD SCREWS
- 1x SS 316 WELD PLATE BASE

ALTERNATIVE OPTIONS AVAILABLE WITH:
 ELONGATED WELD PLATE BASE
 CHANNEL RAIL NUTS
 ALTERNATIVE MATERIALS AVAILABLE

BILL OF MATERIALS

Item	Description	Qty
1	5 way manifold bar, SS316, 1" NB	1
2	MxF lockable ball valve, SS316, 1/4"	5
3	LF3800 push-in elbow, SS316 6mm x 1/4	5
4	Drain valve, lockable, SS316, 1/4"	1
5	Tube clamps c/w SS plates and bolts	2

		
TITLE: LF Series 5-Way Manifold Assembly		
SIZE: A3	PART NO.: LF512-4B3ESX	REV: 1.4
DRWG NO.: HC-0044 D01	SHEET: 1 OF 1	



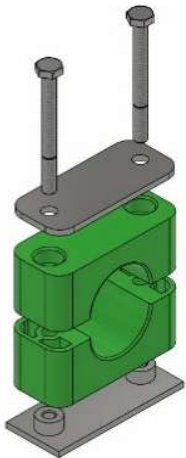
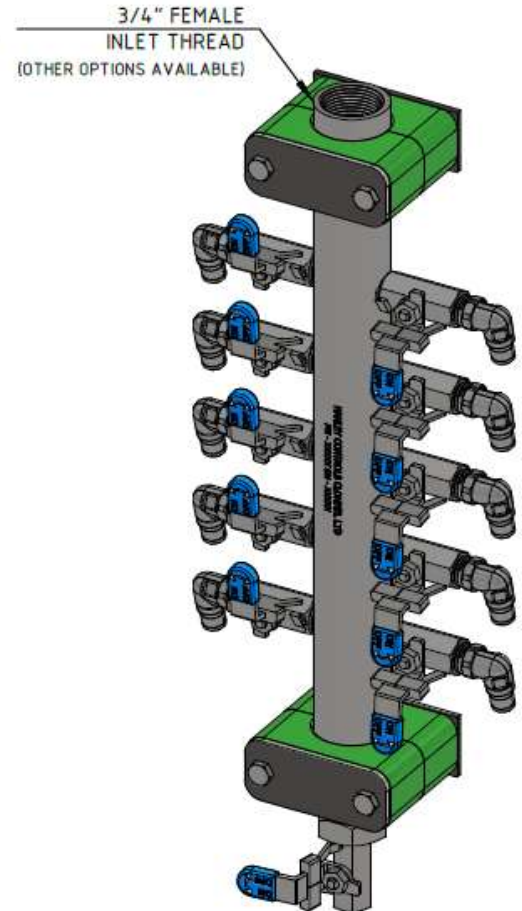
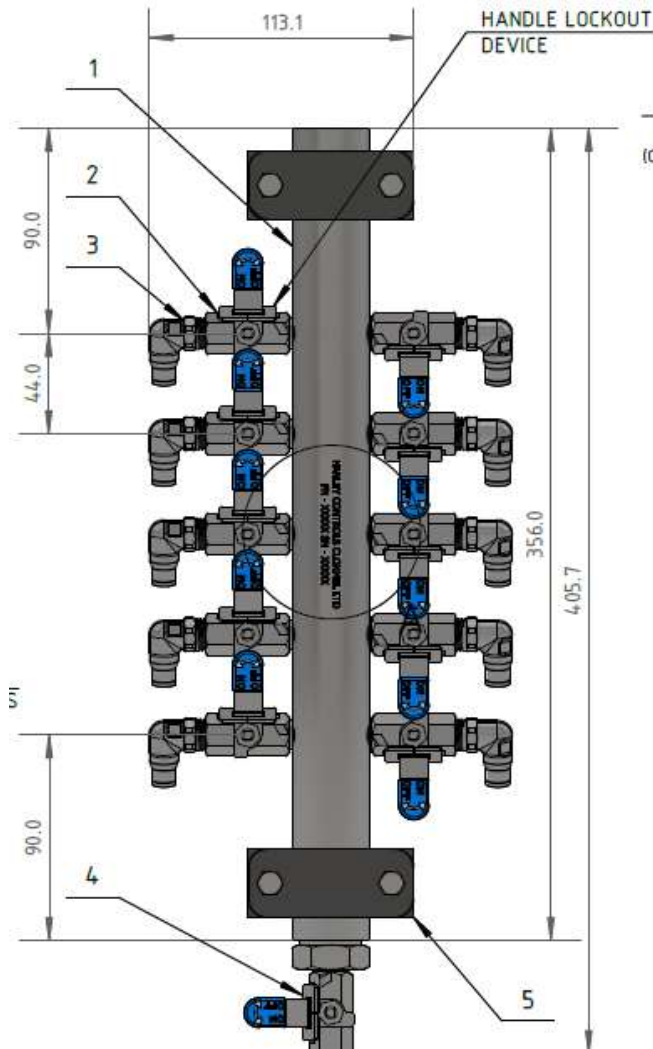
HANLEY CONTROLS

CLONMEL

10 Way Manifold

c/w push-in elbow fittings

Proudly manufactured in Clonmel



CLAMP COMPONENTS

- 2x POLYPROPYLENE CLAMP HALVES
- 1x SS 316 COVER PLATE
- 2x SS 316 M6 HEXAGON HEAD SCREWS
- 1x SS 316 WELD PLATE BASE

ALTERNATIVE OPTIONS AVAILABLE WITH:
 ELONGATED WELD PLATE BASE
 CHANNEL RAIL NUTS
 ALTERNATIVE MATERIALS AVAILABLE

BILL OF MATERIALS

Item	Description	Qty
1	10 way manifold bar, SS316, 1" NB	1
2	MxF lockable ball valve, SS316, 1/4"	10
3	LF3800 push-in elbow, SS316 6mm x 1/4	10
4	Drain valve, lockable, SS316, 1/4"	1
5	Tube clamps c/w SS plates and bolts	2

		
TITLE: LFF Series 10-Way Manifold Assembly		
SIZE: A3	PART NO.: LFF1012-4B3ESX	REV: 1.4
DRWG NO.: HC-0044 D02	SHEET: 1 OF 1	



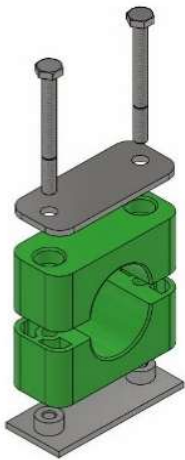
HANLEY CONTROLS

CLONMEL

20 Way Manifold

c/w push-in elbow fittings

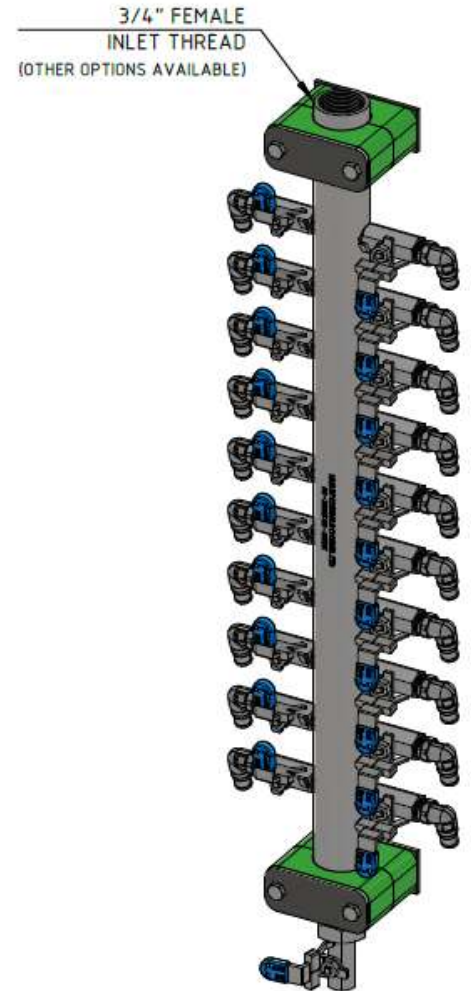
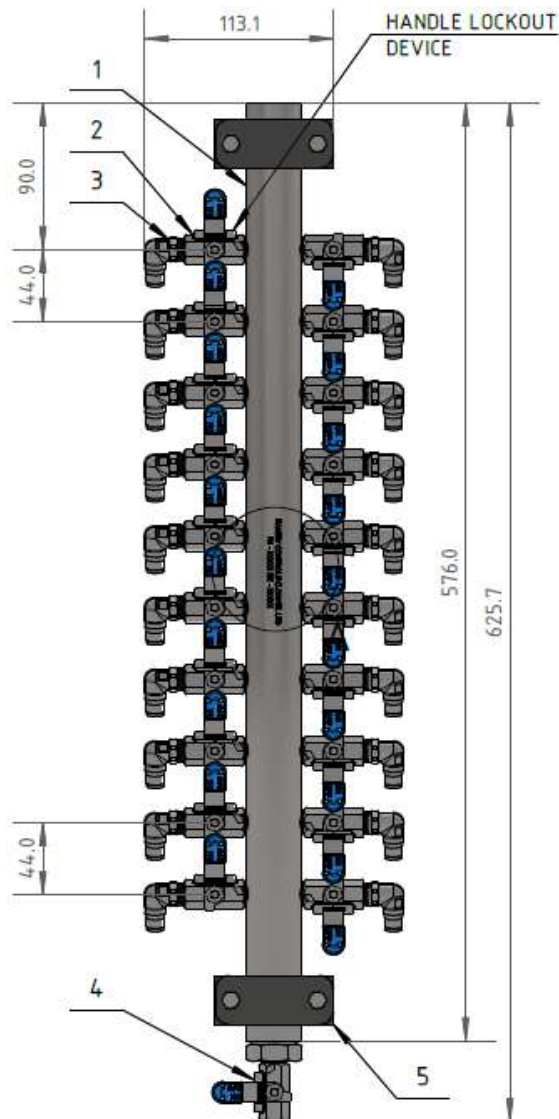
Proudly manufactured in Clonmel




CLAMP COMPONENTS

- 2x POLYPROPYLENE CLAMP HALVES
- 1x SS 316 COVER PLATE
- 2x SS 316 M6 HEXAGON HEAD SCREWS
- 1x SS 316 WELD PLATE BASE

ALTERNATIVE OPTIONS AVAILABLE WITH:
 ELONGATED WELD PLATE BASE
 CHANNEL RAIL NUTS
 ALTERNATIVE MATERIALS AVAILABLE



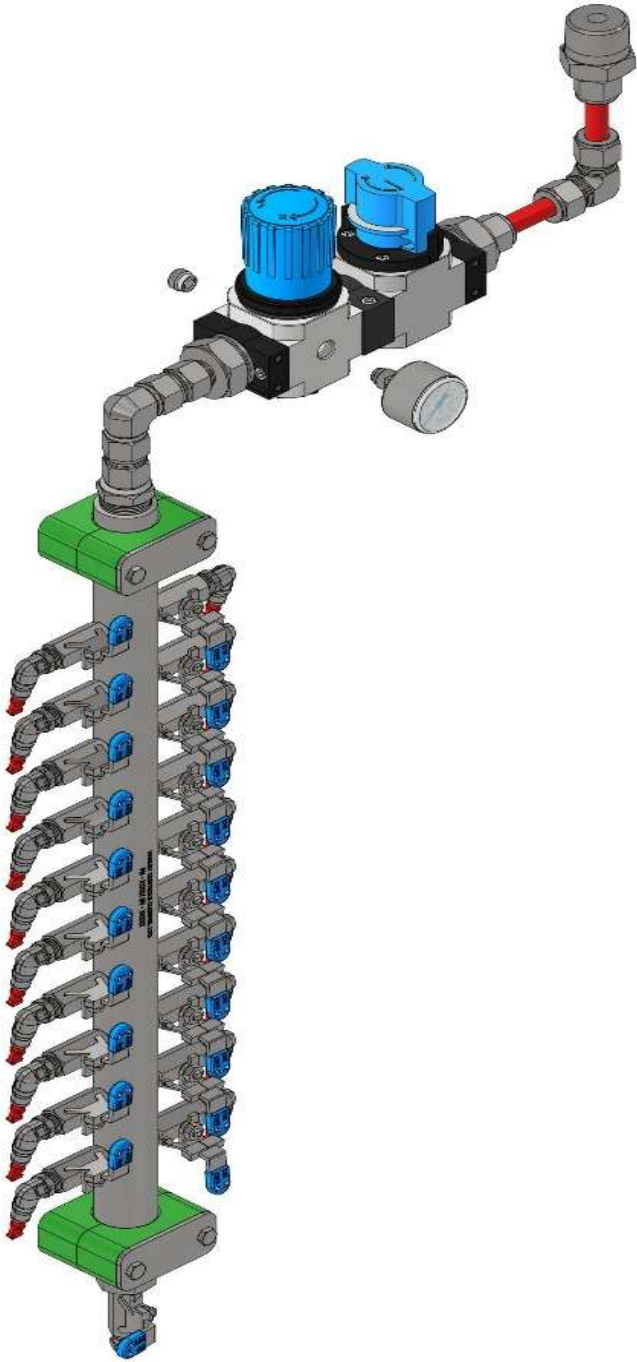
BILL OF MATERIALS		
Item	Description	Qty
1	20 way manifold bar, SS316, 1" NB	1
2	MxF lockable ball valve, SS316, 1/4"	20
3	LF3800 push-in elbow, SS316 6mm x 1/4	20
4	Drain valve, lockable, SS316, 1/4"	1
5	Tube clamps c/w SS plates and bolts	2

		
TITLE: LFF Series 20-Way Manifold Assembly		
SIZE: A3	PART NO.: LFF2012-4B3ESX	REV: 1.4
DRWG NO.: HC-0044 D03	SHEET: 1 OF 1	



Proudly manufactured in Clonmel

20 Way Stick Build Manifold



Reference dwg: HC-0028-02

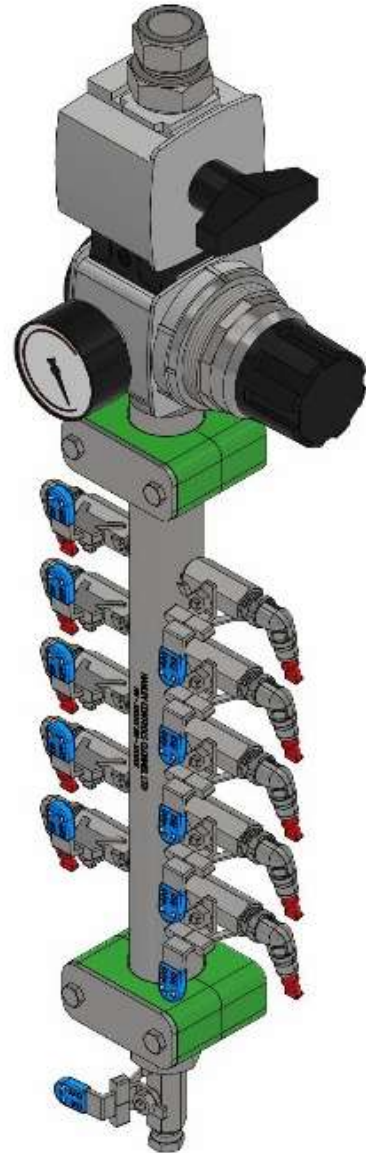
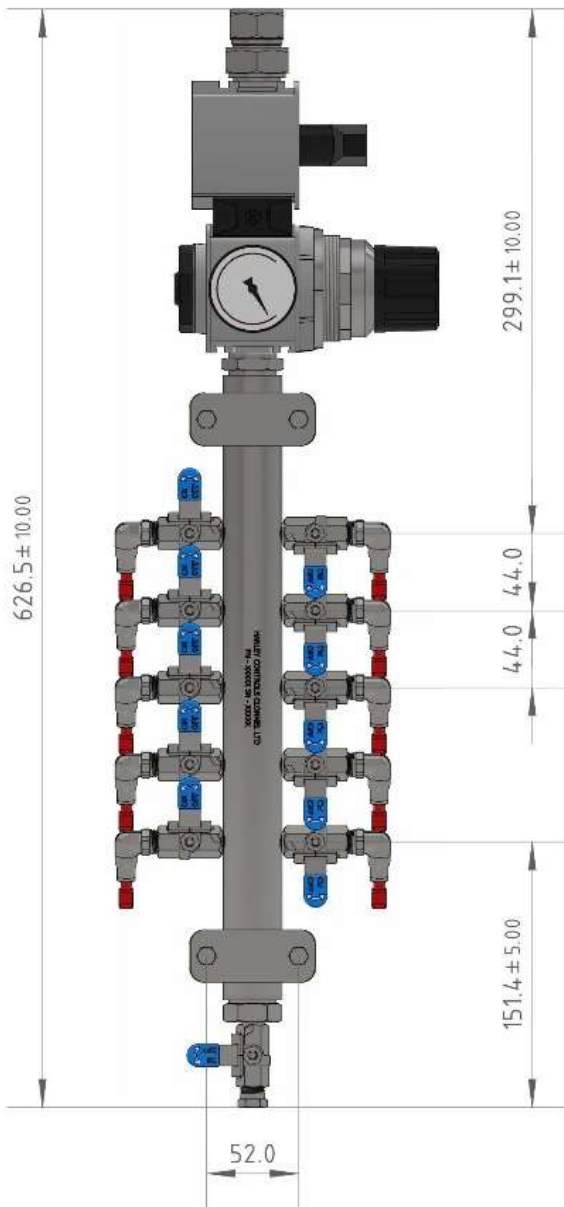


HANLEY CONTROLS

CLONMEL

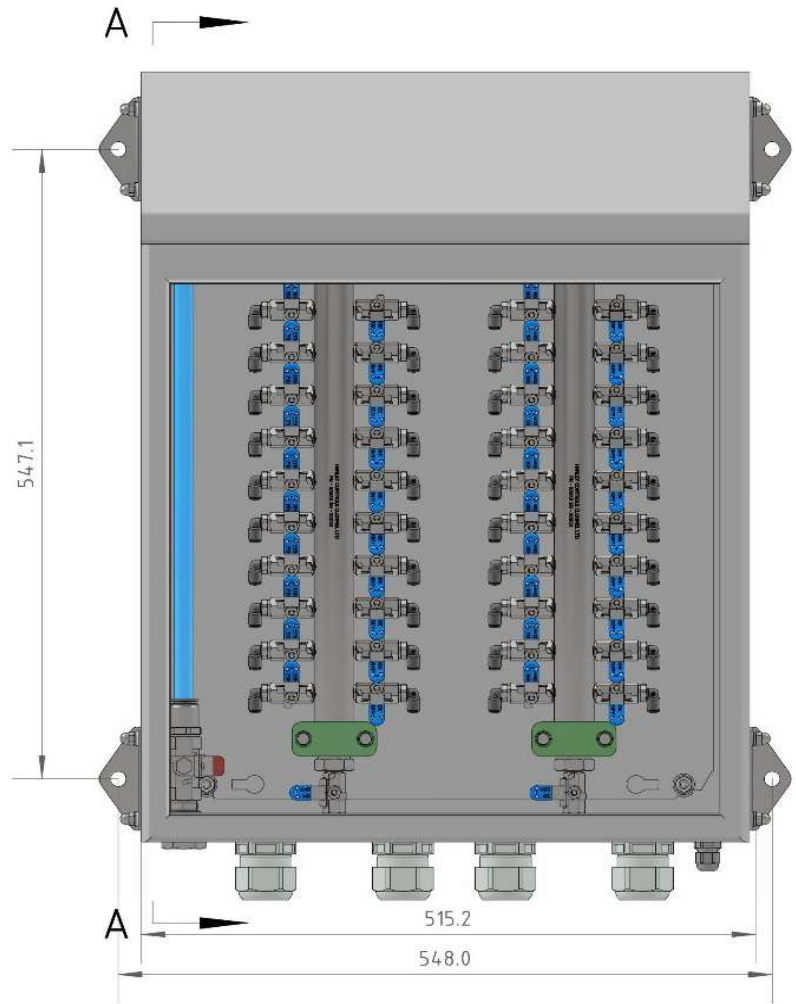
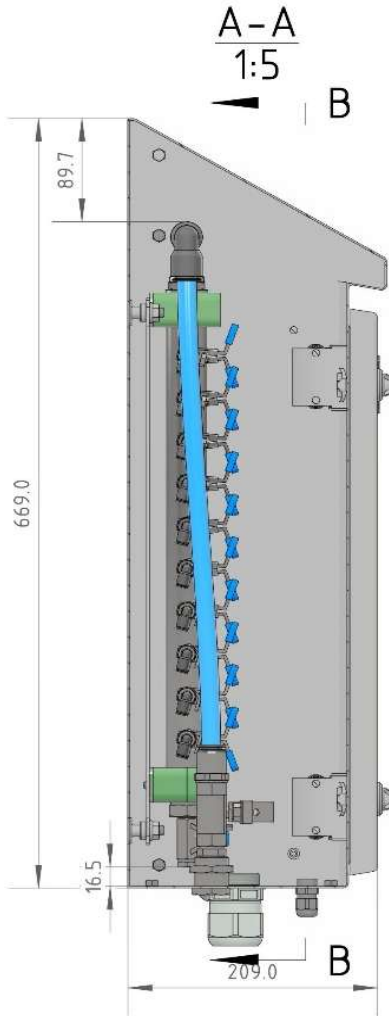
10 Way LF Series w/Reg & Dump Valve

Proudly manufactured in Clonmel



Reference dwg: HC-0043-D01

40 Way Hygienic Enclosure





Typical Manifold Test Certificate

Proudly manufactured in Clonmel

Individual Test Certificate

Cert No. 0013313

Customer:

Model Description: LF SERIES MANIFOLD SS316 SINGLE SIDED - 10 WAYOPTION(S):LF3800 6MM STRAIGHT STUDSINLET: LF3800 6MM STRAIGHT STUDNO DRAIN, OUTLET CAPPED

Order Number: DEL0180924

HCCL Stock Code: LF1012-4B3BZ

Serial Number: T5464

Site Location: ELI LIM

<u>Test No</u>	<u>Test Title</u>	<u>Test Requirements</u>	<u>Test Results</u>
1	Strength Test	8 Bar	PASS
2	Leak Test	8 Bar	PASS
3	Outer Pressure / Vent		PASS
4	Final Quality Check		PASS

Tested By Gavin O'Halloran

Date of Test 20/06/2025



Proudly manufactured in Clonmel

PED Declaration of Conformity

DECLARATION OF CONFORMITY

Hanley Air Distribution Manifolds LF/LG/LH Series

To Whom it May Concern,

Our stainless steel manifold assembly products in the **LF, LG & LH Series** conform to EN Harmonised Standards.

The assembly process is carried out at the Hanley Controls Clonmel Workshop by skilled and competent operators in accordance with our ISO 9001 2015 certified & approved procedures (see current ISO 9001 2015 cert attached)

The products used in these assemblies are mainly governed by the Pressure Equipment Directive (PED) as these products are below the Diameter 32mm and/or pressure range is less than 200 bar.

Therefore, the manifolds require the application SEP "Sound Engineering Practices" and in this case no CE marking is permitted or required.

Please feel free to contact me directly should you have any questions.

Kindest Regards

Paul Fahey

Director/QA Manager

Date 25/01/24



ISO 9001 Certificate

Certificate IE96/6998

The management system of

Hanley Controls Clonmel Limited

Gortnafleur, Clonmel, Co. Tipperary, Ireland

has been assessed and certified as meeting the requirements of

ISO 9001:2015

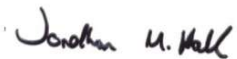
For the following activities

Sourcing, storage and supply of process measurement and control instrumentation, mechanical valves and pipe fittings. Product Assembly and supply of metering units, pipe assemblies, air distribution manifolds and specialist metering / control panels. Provision of calibration services for related measurement equipment



This certificate is valid from 24 January 2024 until 24 January 2027 and remains valid subject to satisfactory surveillance audits.

Issue 14. Certified since 10 April 1996



Authorised by

Jonathan Hall

Global Head - Certification Services

SGS United Kingdom Ltd

Rossmore Business Park, Ellesmere Port, Cheshire, CH65 3EN, UK

t +44 (0)151 350-6666 - www.sgs.com



This document is an authentic electronic certificate for Client' business purposes use only. Printed version of the electronic certificate are permitted and will be considered as a copy. This document is issued by the Company subject to SGS General Conditions of certification services available on Terms and Conditions | SGS. Attention is drawn to the limitation of liability, indemnification and jurisdictional clauses contained therein. This document is copyright protected and any unauthorized alteration, forgery or falsification of the content or appearance of this document is unlawful.





**INSPECTION CERTIFICATE
CERTIFICADO DE INSPECCIÓN
CERTIFICAT DE RECEPCIÓ
ABNAHMEPRÜFZEUGNIS
EN 10204:2004 / 3.1**

Number: 659519 Page: 1 / 5	Rev:
Created on: Date: 02.03.2017	Modified on:

SCHOELLER-BLECKMANN Edelstahlrohr GmbH
2630 Ternitz, Rohrstrasse 1
Austria

TL: 2630316/601
FAX: 2630316/894
E-MAIL: nicole.riegler@sber.co.at

CUSTOMER DESCRIPTION/DESCRIPCIÓN DEL CLIENTE/KUNDENBEZEICHNUNG/COMMETTANT

CLIENT SOLD TO/SOLICITANTE/AUFTRAGGEBER/COMMETTANT TUBACEX SERVICE SOLUTIONS, S.A.U. POLIGONO INDUSTRIAL SARATXO 01470 AMURRIO ESPAÑA	CLIENT SHIP TO/DESTINAT. TUBACEX SERVICE SOLUTIONS S.A.U. POLIGONO INDUSTRIAL SARATXO 01470 AMURRIO ESPAÑA	
--	---	--

CLIENT ORDER/PEDIDO CLIENTE/KUNDEN AUFTRAGSNUMMER/NO.DE COMMANDE: 505658
SALES ORDER/PEDIDO VENTAS/AUFTRAGSNUMMER/NO.DE COMMANDE D'USINE: 192484

MATERIAL:SEAML. STAINL. STEEL TUBES/PIPES/TUBOS INOXIDABLES SIN SOLDADURA/TUBES INOX SANS SOUDURE/NAHTLOSE EDELSTAHLROHRE
HEAT-TREATED, PICKLED / TRATADO, DECAPADO / HYPERTREMPE, DECAPE / WÄRMEBEHANDELT, GEBEIZT, PASSIVATED / PASIVADO / PASSIVÉ / PASSIVIERT
GRADE / ACERO / GRADE / WERKSTOFF: TP316,TP316L,1.4401,1.4404,
STANDARD / NORMA / STANDARD / LIEFERUNG NACH: ASME SECT.II PART.A SA312/SA312M-2015 ED.
ASME SECT.II PART.A SA376/SA376M-2015 ED.
ASTM A312/A312M-16
ASTM A376/A376M-14
EN 10216-5:2013 TC1
EN 10297-2:2005
NACE MR0103-2012
ANSI/NACE MR0175/ISO15156-3:2015
CHECK ANALYSIS
CORROSION TESTED ACC. TO ASTM A262 PRACTICE E
CORROSION TESTED ACC. TO EN ISO 3651-2 PRACTICE A
CORROSION TESTED ACC. TO MIL-P-24691/3 (ASTM A262 PCT.E)
TOLERANCES / TOLERANCIAS / TOLERANCES / TOLERANZEN NACH: ASME SECT.II PART.A SA999/SA999M-2015 ED.
ASTM A999/A999M-15
EN ISO 1127/03.97 D2/T2
PRODUCTION LENGTHS / LARGOS DE PRODUCCION / LONGUEUR DE PRODUCTION / HERSTELLÄNGE 5.000/7.000 MM
PLAIN ENDS / LISOS / EXTRÉMITÉ D'EQUERRE / GLATTE ENDEN,
DIMENSIONS/DIMENSIONES/DIMENSIONS/DIMENSIONS: 33,40 X 6,35 MM / 1 " SCH 160
COLD FINISHED/LAMINADOS EN FRIO/KALTGEFORMT/LAMINES A FROID

Sales Item	Client Item	Delivery No	Lot No.	Heat No	Pieces	Weight	Tot Lgth	Un Lgth
Pos Ped.	Pos CInt	Nº Entrega	Nº lote	Colada	Piezas	Peso	Long. Tot	Long. Un
AuftrgPos	Kunde Pos	Lieferung	Los Nr.	Schmelze	Stück	Gewicht	Gesamtlänge	Längentyp
Usine Pos	Com. Pos	Avis. d'exp	Lot d'inspection	Coulée	Pes	Poids	Tolength	Long. Un
100		8170069569	253934	52248	102	2.588 KG	598,95 M	5000-7000 MM

RAW MATERIAL/DATOS MATERIAL/VORMATERIAL/MATIERE PREMIERE		
Heat Nr: 52248	Supplier ACERALAVA (SPAIN)	Method Electric furnace+AOD



Certified Management System acc. to ISO 9001, ISO 14001 and OHSAS 18001 by LRQA

We hereby certify that the material herein described has been manufactured, sampled, tested, and inspected in accordance with above standards and specifications and satisfies order's requirements. This certificate is issued by a computerized system and it is valid without original signature. In case the owner of the certificate would release as a copy of it, he must attest its conformity to the issued, assuming the responsibility for any unlawful or TUBACEX, not allowed use. Any forgery or falsification of this certificate shall legally prosecuted.

SCHOELLER-BLECKMANN
EDELSTAHLROHR GMBH

Riegler

FR. N. RIEGLER
(WORKS INSPECTOR)

Typical 3.1B cert for Manifold Bar



**INSPECTION CERTIFICATE
CERTIFICADO DE INSPECCION
CERTIFICAT DE RECEPCION
ABNAHMEPRÜFZEUGNIS
EN 10204:2004 / 3.1**

Number: 659519 Page: 2 / 5	Rev:
Created on: Date: 02.03.2017	Modified on:

CHEMICAL COMPOSITION (%) / COMPOSICIÓN QUÍMICA (%) / CHEMISCHE ZUSAMMENSETZUNG (%) / COMPOSITION CHIMIQUE (%)											
*L: Ladle C:Products											
	Heat	Seq	C	Mn	Si	P	S	Ni	Cr	Mo	N
L	52248	1	0,012	1,45	0,280	0,025	0,0010	11,25	16,70	2,14	0,0655
C	52248	1	0,018	1,55	0,310	0,024	0,0030	11,09	16,85	2,21	0,0680

HEAT TREATMENT/TRATAMIENTO TÉRMICO/WÄRMEBEHANDLUNG/TRAITEMENT THERMIQUE
 HIPERTEMLADOS A 1100 °C , 10 min , J
 SOLUTION ANNEALED AT 1100 °C , 10 min , JET
 HYPERTREMPS 1100 °C , 10 min , J
 LOESUNGSGEGLUEHT 1100 °C , 10 min , Jet

TENSILE TEST/TEST DE TENSION/ESSAI TRACTION/ZUGVERSUCH							
Lot No	Sample	T	Rp0.2	Rp1.0	Rm	A2"	A5
		°C	MPa	MPa	MPa	%	%
Min		20	205	240	515	35	40
Max		20			690		
253934	1	20	255	299	557	55	58

HARDNESS TEST/TEST DE DUREZA/DUREE/HÄRTEPRÜFUNG		
Lot No	Sample	HRB
Min		
Max		90
253934	1	78
	2	79

METALURGICAL TESTS/ENSAYOS METALÚRGICOS/METALLURGISCHE PRÜFUNGEN/ESSAIS METALLURGIQUES
 INTERGRANULAR CORROSION TEST ACC. TO ASTM A262 PRACT."E": SATISFACTORY
 ENSAYO DE CORROSION INTERGRANULAR DE ACUERDO A ASTM A262 PRACT.E:
 SATISFACTORIO
 BESTÄNDIGKEIT GEGEN INTERKRISTALLINE KORROSION ENTSPRECHEND ASTM A262
 PRACT.E: IN ORDNUNG
 ESSAI DE CORR. INTERGR. SELON ASTM A262 PRACT.E:SATISFAISANT

INTERGRANULAR CORROSION TEST ACC. TO DIN 50914/DIN EN ISO 3651-2 MET.A:
 SATISFACTORY
 ENSAYO DE CORROSION INTERGRANULAR DE ACUERDO A DIN 50914/ DIN EN ISO
 3651-2 MET.A: SATISFACTORIO
 BESTÄNDIGKEIT GEGEN INTERKRISTALLINE KORROSION ENTSPRECHEND DIN 50914/
 DIN EN ISO 3651-2 VERF.A: IN ORDNUNG
 ESSAI DE CORR. INTERGR. SELON ASTM DIN 50914/DIN EN ISO 3651-2 MET.A:
 SATISFAISANT

INTERGRANULAR CORROSION TEST ACC. TO ASTM A262 PRACT.E/
 MIL-P-24691-3: SATISFACTORY
 ENSAYO DE CORROSION INTERGRANULAR DE ACUERDO A ASTM A262 PRACT.E/
 MIL-P-24691-3: SATISFACTORIO



Certified Management
 System acc. to
 ISO 9001, ISO 14001 and
 OHSAS 18001 by LRQA

SCHOELLER-BLECKMANN
 EDELSTAHLROHR GMBH

Riegler

FR. N. RIEGLER
 (WORKS INSPECTOR)

We hereby certify that the material herein described has been manufactured, sampled, tested, and inspected in accordance with above standards and specifications and satisfies order's requirements. This certificate is issued by a computerized system and it is valid without original signature. In case the owner of the certificate would release a copy of it, he must attest its conformity to the issued, assuming the responsibility for any unlawful or TUBACEX, not allowed use. Any forgery or falsification of this certificate shall legally prosecuted.

AS-BUILT ASSEMBLIES



LF SERIES double sided manifold



LF SERIES double sided manifold with LF3800 push-in elbows



LH SERIES double sided manifold with flanged inlet



LG SERIES double sided manifold with flanged inlet and LF3000 push-in fittings

REFERENCE SITES

