



Dry-break cartridge couplings without locking mechanism made of stainless steel. Available in five different sizes for modular block/plate assembly in sensitive environments. Different coupling sizes can be combined to one multicoupling depending on the application requirements.



Working Pressure*:
up to 15 bar

Material:

- **Coupling:** Nickel plated brass or Stainless Steel
- **Plug:** Nickel plated brass or Stainless Steel
- **Seals:** NBR or FKM

Working Temperature:

- 20°C up to +100°C (NBR)
- 15°C bis +200°C (FKM)

Flow Rate Water:

- **Series 203:** 1.2 l/min.
- **Series 204:** 4.5 l/min.
- **Series 206:** 8.9 l/min.
- **Series 209:** 27 l/min.
- **Series 212:** 32l/min.
pressure drop 0.5 bar

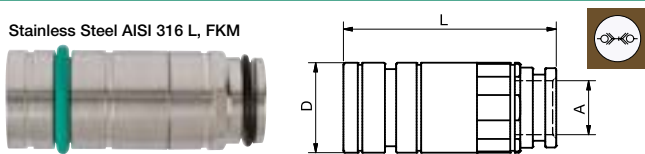
* maximum static working pressure with design factor 4 to 1.



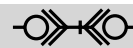
Dry-Break

200KLIWEK Coupler with valve, Female Thread

Stainless Steel AISI 316 L, FKM



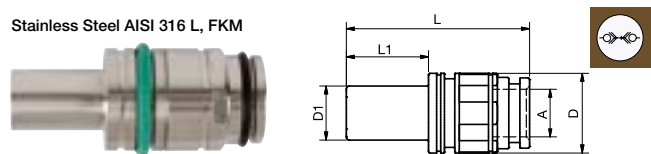
DN	A		L	D
3	G1/16	203KLIW08EVXEK	23	11
4	G1/8	204KLIW10EVXEK	35	16
6	G1/4	206KLIW13EVXEK	54	21
9	G3/8	209KLIW17EVXEK	59	25
12	G1/2	212KLIW21EVXEK	71	32



Dry-Break

200SLIWEK Plug with valve, Female Thread

Stainless Steel AISI 316 L, FKM



DN	A		L	L1	D	D1
3	G1/16	203SLIW08EVXEK	30	12	11	5.3
4	G1/8	204SLIW10EVXEK	42	15	16	8.4
6	G1/4	206SLIW13EVXEK	51	19	21	12.5
9	G3/8	209SLIW17EVXEK	56	26	25	17
12	G1/2	212SLIW21EVXEK	70	28	30	20

Series 200 - Dry-break - Cartridge Couplings



HANLEY CONTROLS

CLONMEL

Technical Features for block- and plate assembly – Tolerances for production of the holder on request.

Block Assembly

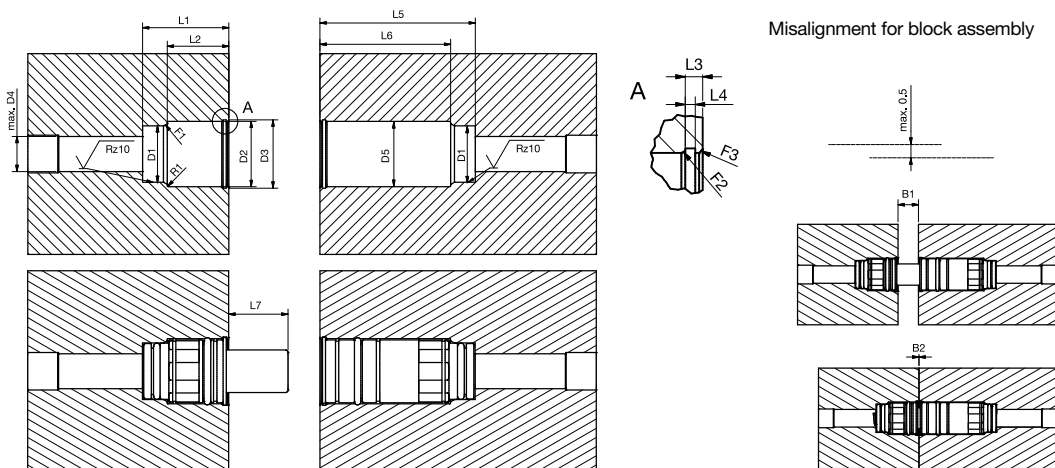
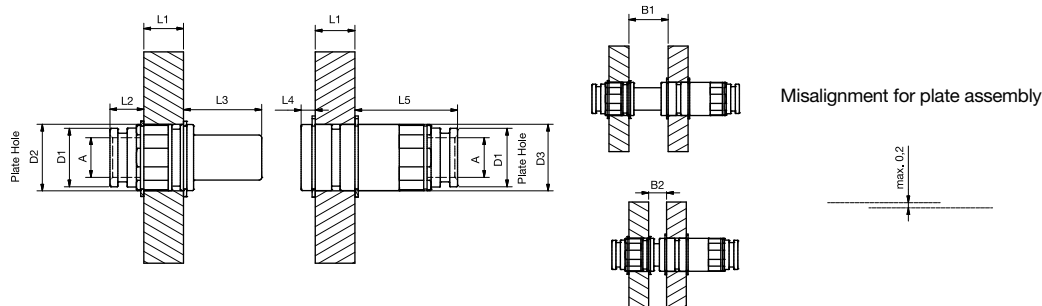


Plate Assembly



Block Assembly

DN mm	L1 mm	L2 mm	L3 mm	L4 mm	L5 mm	L6 mm	L7 mm	D1 mm	D2 mm	D3 mm	D4 max. mm	D5 mm	R1 max. mm	F1	F2	F3	B1	B2
3	20,10	15,00	2,10	1,10	23,60	18,50	8,75	10,00	12,00	12,50	8,00	12,00	0,50	0,8x30°	–	0,5x45°	5,00	0
4	29,00	22,50	2,10	1,10	37,80	31,35	13,00	14,00	17,00	17,80	10,00	17,00	0,50	1,2x30°	0,5x30°	0,5x45°	8,65	0
6	34,25	26,65	2,10	1,10	55,80	48,20	17,00	18,50	22,00	23,00	12,00	22,00	0,50	1,3x30°	0,5x30°	0,5x45°	11,40	0
9	33,80	24,30	2,30	1,30	61,30	51,80	23,60	22,50	26,00	27,20	14,00	26,00	0,50	1,5x30°	0,5x30°	0,5x45°	16,30	0
12	44,00	34,40	2,30	1,30	73,20	63,60	25,80	28,00	31,00	32,70	16,00	33,00	0,50	1,5x30°	0,8x30°	0,5x45°	15,80	0
19	53,15	41,50	3,15	1,85	80,20	68,50	29,25	33,00	42,00	44,50	23,00	45,00	1,50	1,5x30°	1,0x30°	0,8x45°	20,30	0

Plate Assembly

DN mm	L1 mm	L2 mm	L3 mm	L4 mm	L5 mm	L6 mm	L7 mm	D1 mm	D2 mm	D3 mm	Connection A	F1	F2	F3	B1	B2
3	5,00	11,00	12,75	5,50	11,00			9,80	11,2	11,2	G 1/16				16,70	11,70
4	15,00	9,80	17,20	5,50	15,35			13,80	16,2	16,2	G 1/8				20,50	12,70
6	15,00	13,15	23,00	5,50	33,20			18,30	21,2	21,2	G 1/4				25,00	13,50
9	15,00	12,80	29,60	5,30	38,80			22,30	25,2	25,2	G 3/8				29,80	13,50
12	15,00	22,90	31,80	5,30	50,60			27,80	30,2	32,2	G 1/2				29,40	12,30
19	15,00	32,00	35,40	4,40	57,60			32,80	41,2	44,2	G 3/4				33,85	12,30