

Ø metric:  
4 to 10 mm



Pressure regulators stabilise at the maximum determined value the pressure, whatever the fluctuations of the pressure upstream.

## Technical Characteristics (7300)

- **Compatible Fluids:** Compressed air
- **Working Pressure:** Upstream pressure: 1 to 16 bar  
Downstream pressure: 1 to 8 bar
- **Working Temperature:** -10°C to +70°C

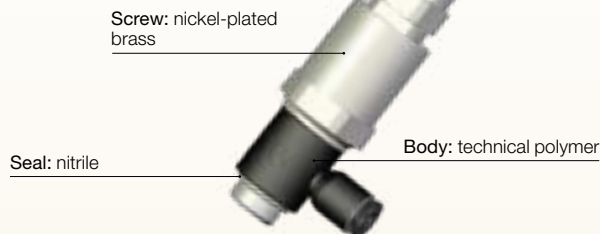
Tightening Torque (BSPT)	Thread	G1/8	G1/4	G3/8
	daN.m		0.4	0.5

## Advantages

- Lockable adjustment possible of the setpoint
- Output pressure adjustment options marked on the screw
- Installation in a manifold allows optimum output pressures to be delivered to specific parts of the circuit
- Designed for applications where cylinder force needs to be controlled: marking, sleeving, crimping cylinders etc.

## Component Materials (7300)

Silicone-free



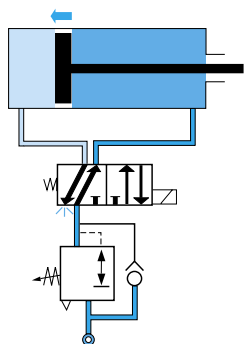
## Regulations

- RoHS
- REACH
- PED

## Operation

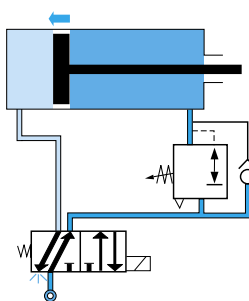
### Mounting Upstream of the Control Valve

Adjustment of the piston feed pressure in both directions

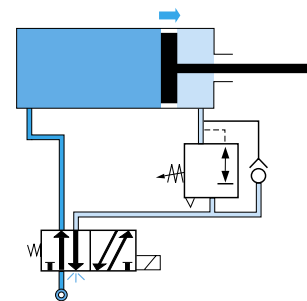


### Mounting Downstream of the Control Valve

Phase 1: adjustment of the piston speed in a single direction

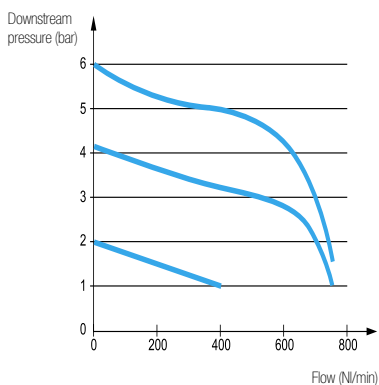


Phase 2: in return direction, pressure is supplied through the control valve

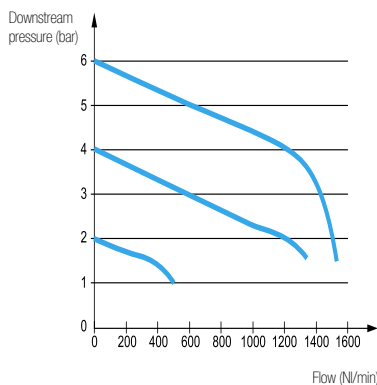


## Flow Characteristics at 7 bar (Nl/min)

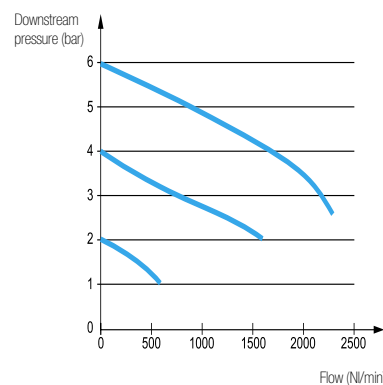
### G1/8 Models



### G1/4 Models

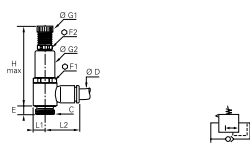


### G3/8 Models



## 7300 Pressure Regulator, Male BSPP Thread

Technical polymer, Nickel-plated brass, NBR



ØD	C		E	F1	F2	G1	G2	H max	L1	L2	Kg
4	G1/8	<b>7300 04 10</b>	4.5	17	13	14	17	65	7	18.5	0.047
	G1/8	<b>7300 06 10</b>	4.5	17	13	14	17	65	7	20	0.047
6	G1/4	<b>7300 06 13</b>	7.5	17	13	14	17	74.5	9.5	22	0.065
	G1/8	<b>7300 08 10</b>	4.5	17	13	14	17	65	7	25	0.048
8	G1/4	<b>7300 08 13</b>	7.5	17	13	14	17	74.5	9.5	27	0.066
	G3/8	<b>7300 08 17</b>	8.5	22	17	18.5	22	84	11.5	28.5	0.122
10	G1/4	<b>7300 10 13</b>	7.5	17	13	14	17	74.5	9.5	29	0.066
	G3/8	<b>7300 10 17</b>	8.5	22	17	18.5	22	84	11.5	30.5	0.122

## DRV Pressure Reducing Valve

Brass



A	A1		HEX	L	L1	Const. Supply Pressure	max. Supply Pressure
G1/4	G1/4	<b>DRV13/20</b>	17	34	9	2 bar	15 bar
G1/4	G1/4	<b>DRV13/30</b>	17	34	9	3 bar	15 bar
G1/4	G1/4	<b>DRV13/40</b>	17	34	9	4 bar	15 bar
G1/4	G1/4	<b>DRV13/50</b>	17	34	9	5 bar	15 bar
G1/4	G1/4	<b>DRV13/60</b>	17	34	9	6 bar	15 bar
G1/4	G1/4	<b>DRV13/70</b>	17	34	9	7 bar	15 bar
G1/4	G1/4	<b>DRV13/80</b>	17	34	9	8 bar	15 bar
G1/4	G1/4	<b>DRV13/100</b>	17	34	9	10 bar	15 bar