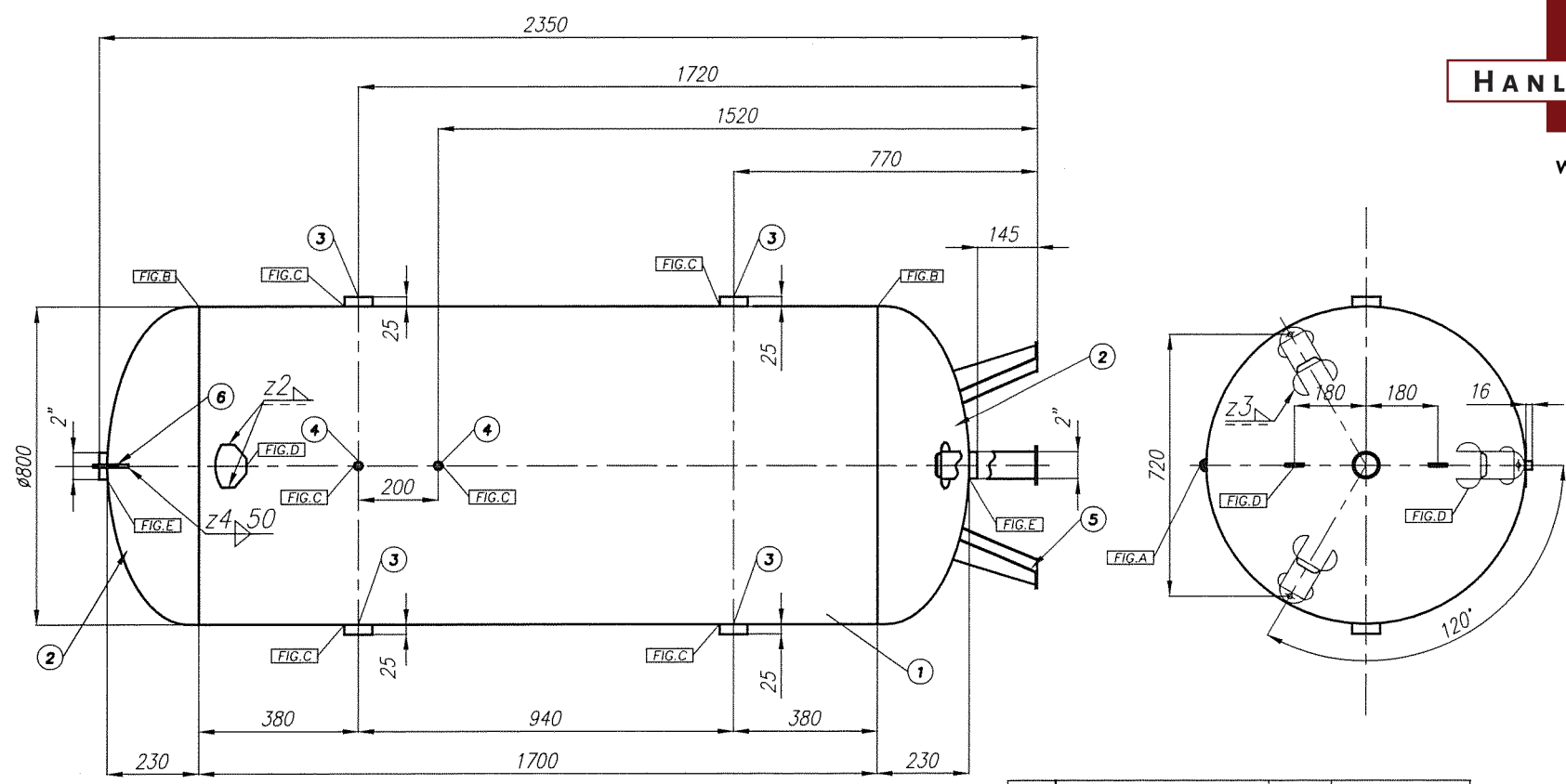




HANLEY CONTROLS
CLONMEL

www.hccl.ie



7
CSC SRL
ITALY 15030 TERRUGGIA
STR. CACCILO 34
CE 1131 PS 12 BAR
V 1000 L AIR PT 17.2 BAR
TMIN- 10° C TMAX+ 50° C
TYPE S100012 MM.YY
NF. B

7	Name plate	1	CAN01161
6	Eyebolt	2	CAN00600
5	Leg	3	CAN00601
4	Coupling G3/8"	2	SOK00136
3	Coupling G2"	4	SOK00127
2	Elliptical head	2	HEK00101
1	Shell	1	STE00420
Pos.	Description	Q.ty	Code

05	AGGIORNATO INTERASSE GAMBE ERA 680 mm	21/12/17	M. ROSSI	REPLACE DRAWING
04	CORRETTA ALTEZZA MANICOTTO G 3/8" DA TERRA	28/11/17	M. ROSSI	VES01049.r04
03	AGGIORNATA POSIZIONE MANICOTTI E INTERASSE GAMBE	16/01/14	M. ROSSI	TOLERANCES, IF NOT INDICATED, ACCORDING TO:
02	REVISIONE GENERALE	03/06/13	M. ROSSI	C-G SE 03.03/3
01	AGGIUNTO UN GOLFARE	19/02/09	M. ROSSI	
REV.	REASON OF REVISION	DATE	SIGN.	
	PREPARED	APPROVED	REVIEWED	SHEET A4
	DATE 15/07/08			SCALE 1:12
	SIGNATURE M. ROSSI			
				DRAWING No.
LT 1000 PD 12 BAR - STANDARD -				VES01049
				REV. 05